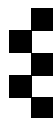




# BOLD. BRAVE. INSPIRED.



**Undergraduate  
Prospectus**



University of Essex

---

Online

# CONTENTS



## CONTENTS

We are Essex Online	04
Student community	06
Student stories	08
Get an insight	14
Online study experience	16
Student support	18
Essex Online benefits	20
Graduation	22
<b>OUR COURSES</b>	<b>24</b>
Business courses	26
Law courses	32
Health courses	42
Psychology courses	46
Computing courses	54
<b>IMPORTANT STUFF</b>	<b>60</b>
Funding your studies	62
Steps to join Essex Online	64
Important information	66

# WE ARE ESSEX ONLINE



## Welcome to Essex Online

Your age, background or previous experience shouldn't hold you back from achieving your goals. At University of Essex Online, we've been delivering the highest quality 100% online and part-time programmes with Kaplan Open Learning since 2007 – ensuring higher education is available to everyone.

Whether it's a Bachelors degree or Certificate of Higher Education, all our qualifications are awarded by the University of Essex, a top UK university. From day one until you graduate, you'll be supported in your journey by our Student Support team, Study Skills team and module tutors who are all dedicated to helping you get the most out of your course.

We're proud to be celebrating our place at the forefront of online education for over 15 years, so if you're ready for your next challenge, we're ready to welcome you home.

# STUDENT COMMUNITY



We don't look at who ticks all the boxes but simply who's up for a challenge.

Our student network includes over 5,000 alumni and students from more than 140 countries worldwide; will you join this global community?

## **Ambitious**

Our students aren't spoon-fed a degree; they earn it by committing to an intellectual, cultural and social journey.

## **Courageous**

Stand out from the crowd and rise to the challenge. Our students aren't afraid to ask questions as many ideas deserve an answer, even the most unconventional ones.

## **Innovative and independent**

Students who think outside the box tend to break intellectual boundaries and expand their knowledge. The autonomy to elevate ideas is 100% yours.

## **Multi-taskers**

Many of our students have a variety of responsibilities outside the classroom. Whatever the circumstances, they still put their all into their studies.

## **Team players**

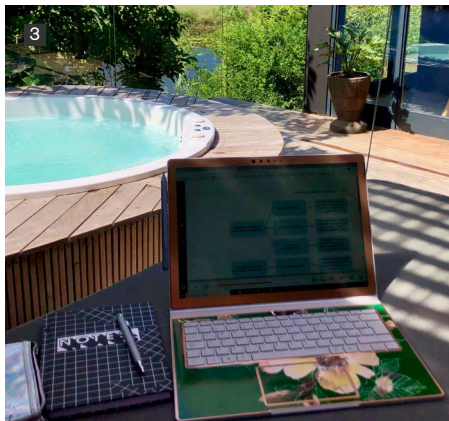
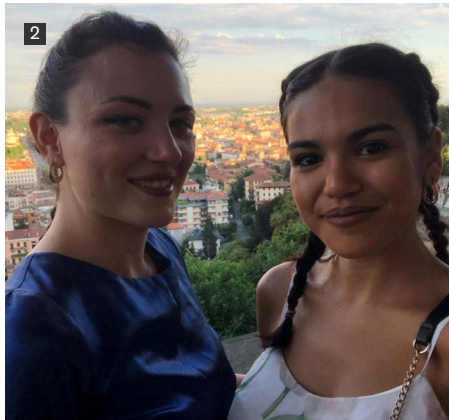
Our courses require students to collaborate and share ideas with their classmates. There's no need to compete with others but simply learn from and inspire each other.

# STUDENT STORIES



**“University of Essex Online also provides me with an authentic university experience thanks to activities like the Journal Club and the Student Council.”**

- 1 – Hillary and her mum, who has been helping her financially and always cheering for her success.
- 2 – Friends have been a source of motivation for Hillary.
- 3 – Hillary’s study setup during her time at a nature reserve in the western province of South Africa.



## Hillary's story

**From Gazzenda, Italy but living in Cape Town, South Africa  
BSc (Hons) Psychology student  
Writer with wanderlust**

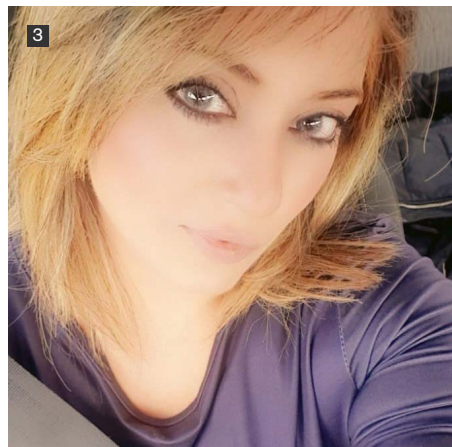
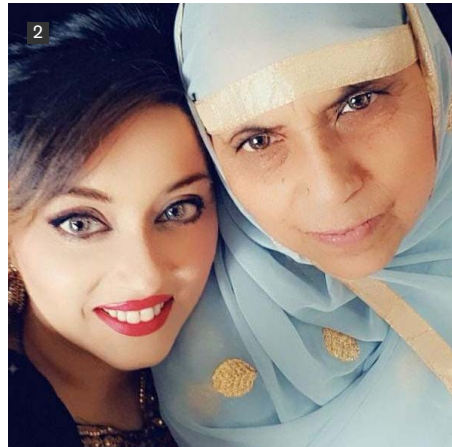
After earning my high school diploma, I was unsure whether to pursue higher education or to start working. At the time, the reputation of online degrees was still undervalued, so I didn't consider e-learning as a choice and focused on traditional institutions only.

I ended up choosing to travel for work rather than going to university. I was 21 years old when I left my home country and believed that I was already too old to enrol at university – the power of public opinion! However, my mind would not stop teasing the idea of getting a degree. I often found myself exploring university courses available in the area I was in at the time, then putting them aside and concentrating on choosing my next destination.

For four years, I continued to postpone the start of my academic journey. When I finally grew tired of spinning around the world like a pinwheel – and I also found myself in a city that I liked – that was when I started thinking about university more seriously. It was clear to me that considering an online degree would be the best option, as it would allow me the flexibility to move around without worrying about interrupting my studies.

Essex Online ended up being my choice mainly because of the admissions process. My assigned Admissions Adviser provided me with clear and prompt answers, and they were willing to help with any doubts I had. This gave me a positive impression of the University which did not change once I started studying my course.

As a student, I have a Student Support team designated to my department, who are always on-hand to support me through my studies. Essex Online also provides an authentic university experience thanks to activities like the Journal Club and the Student Council, while allowing me to organise my schedule and study at my own pace. I have no regrets picking Essex Online!



**“Pursuing higher education allows you to make the most of your life and realise that it’s never too late to achieve your potential.”**

- 1 – Getting out and about in the British countryside.
- 2 – Ambreen with her mother, who’s supported her throughout her studies.
- 3 – Taking time out from studying
- 4 – Ambreen has inspired her daughter to become a judge when she’s older.

## Ambreen’s story

**Raised in Bolton, now living in Blackburn, UK  
CertHE Psychology student  
Breaking boundaries through education**

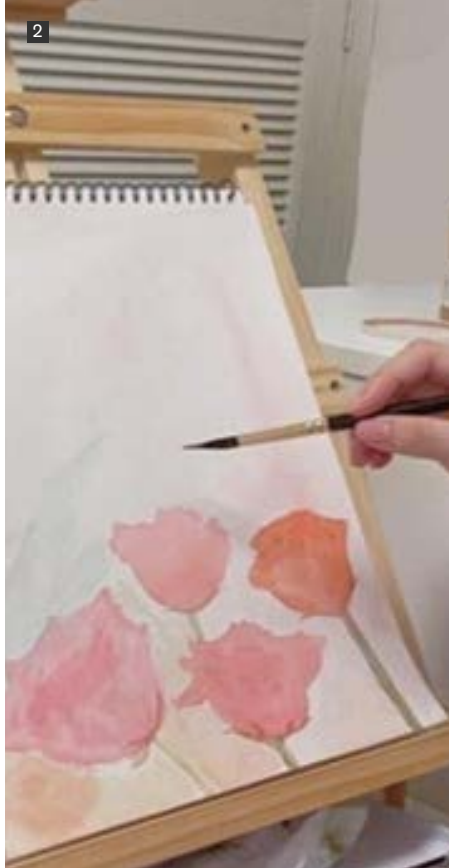
I’m a British Pakistani woman who was born and raised in England.

My loving father’s death when I was young had a huge impact on me and despite cultural barriers, I decided to become self-sufficient at 13.

After finishing secondary school, I wished to go to college to further my education. My mother was instrumental in ensuring I completed my studies and stood by my side. Being the first female in my family to go to college was a significant step for me. This has now become the norm for other women in my family – if I can do it, they can do it too.

A few years after completing college, I became a Mental Health Support Worker. Having such a rewarding job piqued my interest in furthering my education and wanting to explore psychology. I chose the CertHE Psychology with the University of Essex Online as the mode of study allows me to continue working and bringing up my child. While attending university for the first time can be overwhelming, the staff are there to help you overcome your difficulties, and the lovely Student Support team and tutors are incredibly understanding.

My experience has really motivated my daughter and she now aspires to become a judge when she’s older. It can be difficult to study at times, but you learn not to give up. Pursuing higher education allows you to make the most of your life and realise that it’s never too late to achieve your potential. Believe in yourself, follow your dreams and trust your inner ability as nothing is impossible.



**“I chose to study my BSc (Hons) Psychology with the University of Essex Online as the course is accredited by the British Psychology Society (BPS) and provides opportunities to collaborate and interact with tutors and peers – just like an offline course.”**

1 – Profile image of Hei. 2 – Away from studying, Hei enjoys painting.

## Hei's Story

### **Living in Hong Kong, SAR, BSc (Hons) Psychology student Undergoing an exciting career change.**

While a 9-to-5 office job is the norm in Hong Kong, I realised it wasn't right for me and decided to switch career paths during the pandemic. It was a tough decision, but I felt it was time to explore other options.

After analysing myself using the Ikigai framework – a Japanese concept of finding purpose in life – I discovered studying psychology would allow me to turn my strengths and passions into a career that would also help others.

It made sense for me to study online since most education providers were shifting to online learning due to Covid-19 and I didn't want to wait any longer. I chose to study my BSc (hons) Psychology with the University of Essex Online as the course is accredited by the British Psychology Society (BPS) and provides opportunities to collaborate and interact with tutors and peers – just like an offline course.

I enjoyed the Welcome Week, which allowed us to become familiar with the online learning platform and take time to get to know other students on the Students' Forum. I also benefitted from career advice, including CV writing, interview tips and ways to improve my professional skills.

My course also provides modules on research methods to prepare us for the final research project. This is something I'm really looking forward to as it allows me to develop key skills in psychology. Also, since I'm considering postgraduate study, I believe this would help build a strong foundation for future study too.

I have really benefited from studying 100% online. The flexibility allows me to structure my work-life balance and I am now working as a translator while studying. Despite my busy schedule and long reading list, I still find time to volunteer, read psychological journals and blogs, and paint.

# GET AN INSIGHT

**Our global student ambassador team is available in various ways to provide you with an authentic insight into what it's like to study with us.**

## Get answers to your questions

Visit our website to find the Unibuddy chat platform, which allows you to send messages to our students and ask them any questions you may have about studying online. Our student ambassadors also write blogs on their experience and tips they'd like to share.

[Chat to a student](#)

## Book your place at a virtual event

We deliver a variety of virtual events throughout the year, which our student ambassadors attend to share their student perspectives.

[View calendar of virtual events](#)

## Try a taster

Unsure whether online learning will suit you? Try one of our free lecturecasts – interactive multimedia learning experiences – to give you a taster of how you'll learn with us.

[Give it a go](#)

## Stay in the know

When they have some time in their busy schedules, our student ambassadors write blogs and film vlogs to offer you a sneak peek into their online study experience. If you don't already follow our social media channels, give us a like or follow now so you don't miss out on the latest updates!

 [UniEssexOnline](#)

 [uniessexonline](#)

 [UniEssexOnline](#)

 [University of Essex Online](#)

 [UniEssexOnline](#)

 [@uniessexonline](#)

[#EssexOnline](#)

# ONLINE STUDY EXPERIENCE



## Virtual learning platform

Every course is delivered via our very own virtual learning environment (VLE). It's accessible 24/7, so wherever you are in the world and whatever the time, you can log in and access your study materials whenever you need.

## Lecturecasts

Your course content is delivered via contemporary lecturecasts, allowing you to interact with multimedia content and check your understanding via engaging activities.

## Discussion forums

Regular discussion forums are ideal for exploring your course matter, sharing your experiences and learning from fellow students.

## Live sessions

Tutors host regular live sessions throughout your modules, giving you the opportunity to ask questions and discuss course materials in more depth.

While we encourage you to attend our live sessions, we understand this isn't always possible with other commitments. That's why these sessions are recorded for you to watch at a convenient time. There are also other opportunities to ask your tutor questions and interact with peers.

## Online resources

As well as free core textbooks, you'll also enjoy access to the University of Essex eLibrary which features a huge range of academic texts and journals.

## Assessments

There's no need to worry about getting to an exam centre. All your assessments will be made online and include written assignments that can be completed from the comfort of your home.

---

**Our state-of-the-art VLE has been designed specifically to deliver 100% online degree courses. The modules are presented to students in a flexible, interactive and engaging format which promotes collaborative learning and helps students achieve their goals. Throughout their course, students also have access to a wide range of support materials and services to help with academic writing, study skills, career development and much more.**

---

**Stephen Livesey**  
Director of Learning Technology

# STUDENT SUPPORT

**Studying independently doesn't mean studying alone. Throughout your course, a range of teams will be ready to help, from academic to pastoral and technical support. Plus, you'll have plenty of opportunities to collaborate, discuss and debate with your tutors and fellow classmates.**



## Academic support

Our tutors are experts in their field and will be happy to help with any academic queries via regular live sessions and constructive feedback on your assignments.

## Study skills

Our Study Skills team are here to help improve your academic standing. They offer enhanced support with the finer aspects of academic writing, referencing, academic integrity and more.

## Disability support

If you have any form of disability, mental health condition, or learning difficulty, there are adjustments we might be able to make for you. We recommend you let us know about any disability or condition you have during the application process; so our Disability Support team can consider any appropriate adjustments before you start your course.

## Student Welfare

Student wellbeing and mental health are both vitally important, and our Student Welfare and Safeguarding Officers are on hand to address any such concerns and help ensure you're in the best place to study.

## Admissions advisers

You'll be assigned a dedicated admissions adviser as soon as you enquire or apply to one of our courses. They'll guide you through the entire application process and will be on-hand to help with any practicalities, as well as answer questions.

## Student advisers

You'll be provided a dedicated team of student support advisers appropriate to your chosen course. Your team will welcome you on your first day and be with you throughout your entire student journey – offering advice and ensuring you get the most out of your studies.

## Finance support

Our Finance Support team are available to provide you with up-to-date advice on your tuition fees, payments, and student loans – ensuring you're ready to progress easily through your course.

---

**We understand the challenges online students face. That's why you'll have access to a range of supportive services throughout your time at University of Essex Online. From Student Support and Study Skills to Finance Support and Disability Support; whatever your situation, all our teams are here to provide tailored support to enhance your learning journey.**

---

**Katy Bailey**  
Director of Student Services

# ESSEX ONLINE BENEFITS



## Flexible study approach

Whether you have a full-time job, a busy family life or an action-packed travel schedule, our online and part-time courses utilise the latest technology to help you fit studying around your busy lifestyle.

## Affordable education

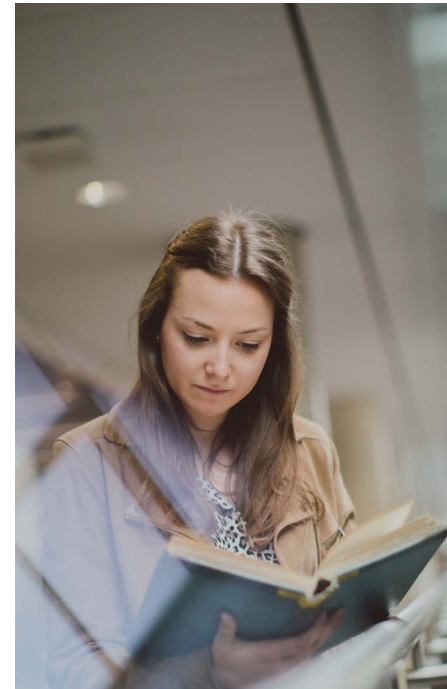
Student loans are available to eligible students based in England. For those self-funding their studies, we offer flexible monthly payment plans, plus a range of discounts and scholarships.

## Quick feedback turnaround

Throughout the course we'll provide feedback on submitted assignments within seven days, so you'll always have an up-to-date perspective on how you're doing.

## Small class sizes

To make sure you get the best possible level of support from our academic staff, we keep classes small.



## Free trial period

Within the first 21 days of signing up, if you feel the course isn't right for you or you change your mind, you can receive a full refund ([Terms and Conditions apply](#)).

## Entry requirements

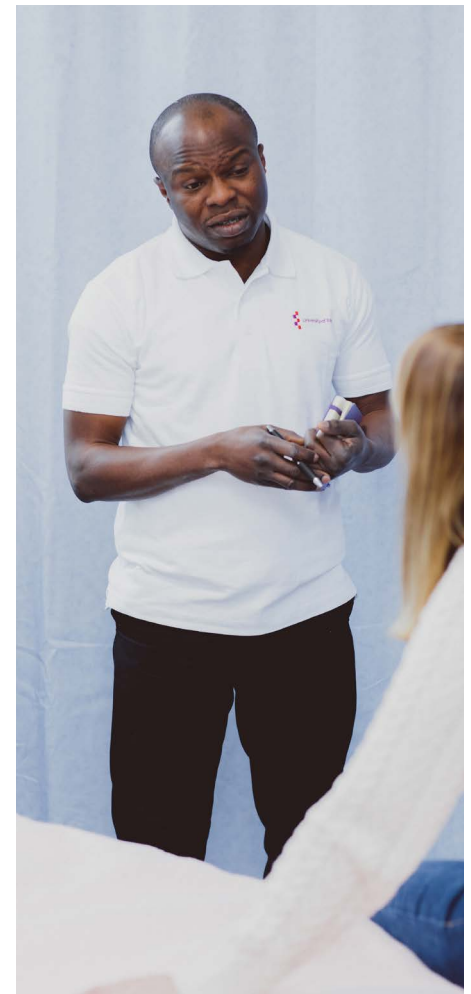
We consider all applications on an individual basis, taking into account your academic achievements, work experience and professional background – as well as offering entry routes for those without these. For more detailed information on specific course entry requirements, please check the relevant course page in this prospectus.

## Regular intakes

At University of Essex Online, we have multiple start dates throughout the year – allowing you study when it best suits you. You can find the start dates for your course on our website.

## Apply now

Excited to get started? Start an online application [here](#).



# GRADUATION



Upon successful completion of a Bachelors degree, you'll be invited to attend a graduation ceremony at the University of Essex Colchester Campus.



## Celebrate your achievement

Completing your Bachelors degree is a very special milestone in your life. Graduation is an opportunity to celebrate your hard work and dedication while also recognising and acknowledging the support received from family, friends and classmates.

## Meet your tutors and student advisers

For our graduates, this is likely to be the first they meet in-person the staff members who have been integral to their study.

## Explore Essex's campus

The beautiful University of Essex Colchester Campus is home to 16 academic departments and schools, and over 15,000 students. Graduation takes place in July.

## Receive your certificate

You'll receive the same certificate as students who studied on campus – the mode of study is only mentioned on your academic transcript with your final grades.



[Watch our previous graduation videos.](#)



# OUR COURSES

Whatever your passion, explore it with the University of Essex Online.

All our courses are delivered by Kaplan Open Learning, a highly experienced online learning provider. They've been designed with online delivery in mind from the very beginning and are taught by leading industry experts.

## **CertHE**

Our Certificate of Higher Education courses usually take around 16 months to complete. They have an open entry route – meaning you don't need any prior academic or work experience to study – and on completion, you can progress on to a full BA (Hons), BSc (Hons) or LLB (Hons).

## **BA Hons**

Our Bachelor of Arts degrees have an indicative duration of four years, allowing you to study for a recognised qualification part-time while you work.

## **BA Hons (Top-up)**

If you've already studied a Foundation degree or equivalent elsewhere, you can top up your qualification to a full BA Hons degree with one of our 16-month top-up courses.

## **BSc Hons**

Our 100% online and part-time Bachelor of Science degrees will give you a solid understanding of your chosen subject area, ensuring you're well prepared for future career opportunities.

## **LLB Hons**

The Bachelor of Laws qualification is a widely recognised qualification within the global law sector. In fact, we're the only 100% online provider offering the LLB (Hons) Law with no need for in-person assessments or exams.



**Tasters available** – If you see this on a page, it means we have a taster lecturecast for this course.

# BUSINESS COURSES



Ready to be on the cutting edge of business? Specialise in management or marketing, or keep your options open on the shorter CertHE course, and gain the key knowledge any savvy business professional needs – as well as core problem-solving, communication and decision making skills.

## OUR BUSINESS COURSES

BA (Hons) Business and Management	360 credits
BA (Hons) Business and Management (Top-up)	120 credits
CertHE Business and Management	120 credits
BA (Hons) Business and Marketing	360 credits
BSc (Hons) Business Psychology	360 credits
CertHE Business Psychology	120 credits
LLB (Hons) Law with Business	360 credits
CertHE Law with Business	120 credits

Check out our combined courses section for more information

# BUSINESS AND MANAGEMENT



**Our practical and comprehensive business courses allow you to examine real-world companies and develop skills essential to any successful manager. Improve your project management, leadership and financial knowledge while sharing ideas with fellow students from around the world.**

## OUR BUSINESS AND MANAGEMENT COURSES

Qualification	Duration
BA (Hons) Business and Management	4 years
BA (Hons) Business and Management (Top-up)	16 months
CertHE Business and Management	16 months

**Study mode:** online and part-time

### Level 4 modules

Fundamentals of Effective Learning - 15 credits<sup>▲</sup>

Business and Management Skills - 15 credits<sup>▲</sup>

Fundamentals of Marketing - 15 credits<sup>▲</sup>

Human Resource Management - 15 credits<sup>▲</sup>

Introduction to Finance - 15 credits<sup>▲</sup>

Business Environment - 15 credits<sup>▲</sup>

Core Skills and Employability - 30 credits<sup>▲</sup>

### Level 5 modules

Business Planning - 15 credits<sup>▲</sup>

Marketing and Sales Management - 15 credits<sup>▲</sup>

Operations Management - 15 credits<sup>▲</sup>

Leadership and Managing Teams - 15 credits<sup>▲</sup>

Financial Decision Making - 15 credits<sup>▲</sup>

Project Management - 15 credits<sup>▲</sup>

Business Investigation - 30 credits<sup>▲</sup>

### Level 6 modules

Global Business Environment - 15 credits

Business Strategy - 15 credits<sup>▲</sup>

Strategic Human Resource Management - 15 credits

Business Law - 15 credits

International Marketing Strategy - 15 credits

Business Finance - 15 credits

Advanced Business Project - 30 credits<sup>▲</sup>

## CAREER PROSPECTS

Upon completion of your degree, you'll hold a whole range of transferable skills and commercial knowledge. Our specialist pathways don't just prepare you for business. The commercial knowledge gained will also make you well suited for roles in finance, consultancy, project management, advertising and marketing.

**For more information, visit [online.essex.ac.uk](http://online.essex.ac.uk)**

## ENTRY REQUIREMENTS

### Academic entry route:

You must have two A-levels or equivalent.

### Work experience entry route:

You must have two A-levels or equivalent; plus three years' relevant work experience.

### Open entry route (CertHE only):

No prior academic or work experience is needed to study the CertHE. On completion, you can progress on to the BA (Hons) Business and Management.

<sup>▲</sup> Core module (must be passed in order to achieve the award)

# BUSINESS AND MARKETING



Improve your ability to think creatively and strategically with our wide-ranging business and marketing degree. Using real-world examples, you'll discuss key marketing trends with your peers while improving your business know-how as a whole.

## OUR BUSINESS AND MARKETING COURSES

Qualification	Duration
BA (Hons) Business and Marketing	4 years
CertHE Business and Management	16 months

**Study mode:** online and part-time

### Level 4 modules

Fundamentals of Effective Learning in Psychology  
15 credits<sup>▲</sup>

Business and Management Skills - 15 credits<sup>▲</sup>

Fundamentals of Marketing - 15 credits<sup>▲</sup>

Human Resource Management - 15 credits<sup>▲</sup>

Introduction to Finance - 15 credits<sup>▲</sup>

Business Environment - 15 credits<sup>▲</sup>

Core Skills and Employability - 30 credits<sup>▲</sup>

### Level 5 modules

Business Planning - 15 credits<sup>▲</sup>

Marketing and Sales Management - 15 credits<sup>▲</sup>

Operations Management - 15 credits<sup>▲</sup>

Consumer Behaviour - 15 credits<sup>▲</sup>

Marketing Communications - 15 credits<sup>▲</sup>

Project Management - 15 credits<sup>▲</sup>

Business Investigation - 30 credits<sup>▲</sup>

### Level 6 modules

Global Business Environment - 15 credits<sup>▲</sup>

Business Strategy - 15 credits<sup>▲</sup>

e-Business and Marketing - 15 credits<sup>\*</sup>

Marketing Research - 15 credits<sup>▲</sup>

International Marketing Strategy - 15 credits<sup>▲</sup>

Services Marketing - 15 credits

Advanced Business Project - 30 credits<sup>▲</sup>

<sup>\*</sup>Compulsory modules ▲ Core module (must be passed in order to achieve the award)  
CertHE (Level 4 modules only)

## CAREER PROSPECTS

Business and marketing skills are highly sought after in a variety of industries. By gaining both commercial and creative experience, you'll become an ideal candidate for positions in finance, consultancy, project management, advertising and marketing.

For more information, visit [online.essex.ac.uk](http://online.essex.ac.uk)

## ENTRY REQUIREMENTS

**Academic entry route:** You must have two A-levels or equivalent.

**Work experience entry route:** You must have two A-levels or equivalent; plus three years' relevant work experience.

**Open entry route (CertHE only):** No prior academic or work experience is needed to study the CertHE. On completion, you can progress on to the BA (Hons) Business and Management.

# LAW COURSES

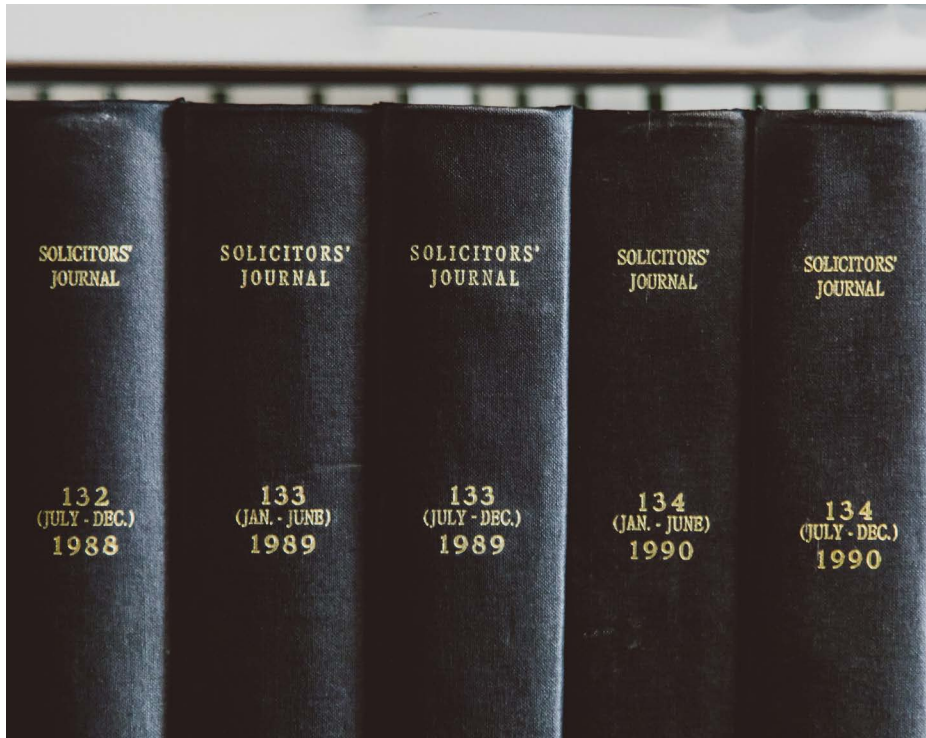


By choosing to study law with the University of Essex Online, you'll gain extensive legal knowledge to really excel in this field. Both our LLB and CertHE courses are recognised by approving industry bodies. With a strong focus on employability, you'll be well prepared for a challenging yet rewarding career in law.

## OUR LAW COURSES

LLB (Hons) Law	360 credits
CertHE Law	120 credits
LLB (Hons) Law with Business	360 credits
CertHE Law with Business	120 credits
LLB (Hons) Law with Criminology	360 credits
CertHE Law with Criminology	120 credits
LLB (Hons) Law with Psychology	360 credits
CertHE Law with Psychology	120 credits

# LAW



Our LLB is designed with aspiring barristers and solicitors in mind, while the CertHE is ideal as a first step into study at a higher education level. Learn about all aspects of criminal, public and contract law, while strengthening your critical thinking, communication and debating skills.

## OUR LAW COURSES

Qualification	Duration
LLB (Hons) Law	4 years
CertHE Law	16 months

**Study mode:** online and part-time

### Level 4 modules

Legal Skills and Context - 30 credits<sup>▲</sup>

Criminal Law - 30 credits<sup>▲</sup>

Public Law - 30 credits<sup>▲</sup>

Contract Law - 30 credits<sup>▲</sup>

### Level 5 modules

Law of Tort - 30 credits<sup>▲</sup>

Land Law - 30 credits<sup>▲</sup>

European Union Law - 15 credits<sup>▲</sup>

Optional modules equal to 45 credits: Company Law (30 credits)<sup>§</sup> / Legal Professions and Services (15 credits)<sup>§</sup> / Business Law: Finance and Tax (15 credits)<sup>§</sup> / Introduction to Public International Law (15 credits)

### Level 6 modules

Equity and Trusts - 15 credits<sup>▲</sup>

Wills and the Administration of Estates - 15 credits<sup>▲§</sup>

Three optional modules 30 credits each:  
Final Year Research Project / Reasoning and Decision-Making<sup>§</sup> / Criminal and Civil Litigation<sup>§</sup> / Commercial Law / Family Law / Law of Evidence<sup>§</sup> / International Trade Law / Employment Law / Medical Law

## CAREER PROSPECTS

Extensive legal knowledge doesn't just prepare you for a career in law; the skills you gain will also prepare you for roles in human resources, education, local and central government, and management. With further training you could also qualify as a lawyer.

**For more information, visit [online.essex.ac.uk](http://online.essex.ac.uk)**

## ENTRY REQUIREMENTS

### Academic entry route:

You must have three A-levels or equivalent.

### Work experience entry route:

You must have GCSE Maths and English at grade C or above, or equivalent; plus three years' relevant work experience.

### Open entry route

**(CertHE only):** No prior academic or work experience is needed to study the CertHE. On completion, you can progress on to the LLB (Hons) Law.

<sup>▲</sup> Core module (must be passed in order to achieve the award)

<sup>§</sup> These modules are SQE-focused.

# LAW WITH BUSINESS



Did you know we're the only 100% online provider to offer LLB (Hons) Law with Business? This course will give you a thorough understanding of criminal and public law, as well as the English legal system and legal conduct. You can also choose to study the CertHE, ideal if you have no prior experience in this field.

## OUR LAW WITH BUSINESS COURSES

Qualification	Duration
LLB (Hons) Law with Business	4 years
CertHE Law with Business	16 months

**Study mode:** online and part-time

### Level 4 modules

Legal Skills and Context - 30 credits<sup>▲</sup>

Criminal Law - 30 credits<sup>▲</sup>

Public Law - 30 credits<sup>▲</sup>

Business Environment - 15 credits<sup>▲</sup>

One optional module (15 credits each): Business and Management Skills / Fundamentals of Marketing / Human Resource Management / Introduction to Finance

### Level 5 modules

Contract Law - 30 credits<sup>▲</sup>

Law of Tort - 30 credits<sup>▲</sup>

Land Law - 30 credits<sup>▲</sup>

Operations Management - 15 credits<sup>▲</sup>

One optional module (15 credits each): Leadership and Managing Teams / Marketing and Sales Management / Financial Decision Making / Business Planning / Project Management / Marketing Communications / Consumer Behaviour

### Level 6 modules

European Union Law - 15 credits<sup>▲</sup>

Equity and Trusts - 15 credits<sup>▲</sup>

Wills and the Administration of Estates - 15 credits<sup>▲</sup>

Business Strategy - 15 credits<sup>▲</sup>

Optional modules equal to 60 credits: Final Year Research Project (30 credits) / Strategic Human Resource Management (15 credits) / International Marketing Strategy (15 credits) / Business Finance (15 credits) / e-Business and Marketing (15 credits) / Marketing Research (15 credits) / Services Marketing (15 credits)

<sup>▲</sup> Core module (must be passed in order to achieve the award)

<sup>†</sup> Optional module (choose one for level 4 and level 5, and equalling 60 credits at level 6)

## CAREER PROSPECTS

Legal knowledge isn't just valuable for a career in law – your skill set will also be useful for roles in finance, human resources, education, management, and the local and central government.

For more information, visit [online.essex.ac.uk](http://online.essex.ac.uk)

## ENTRY REQUIREMENTS

### Academic entry route:

You must have three A-levels or equivalent.

### Work experience entry route:

You must have GCSE Maths and English at grade C or above, or equivalent; plus three years' relevant work experience.

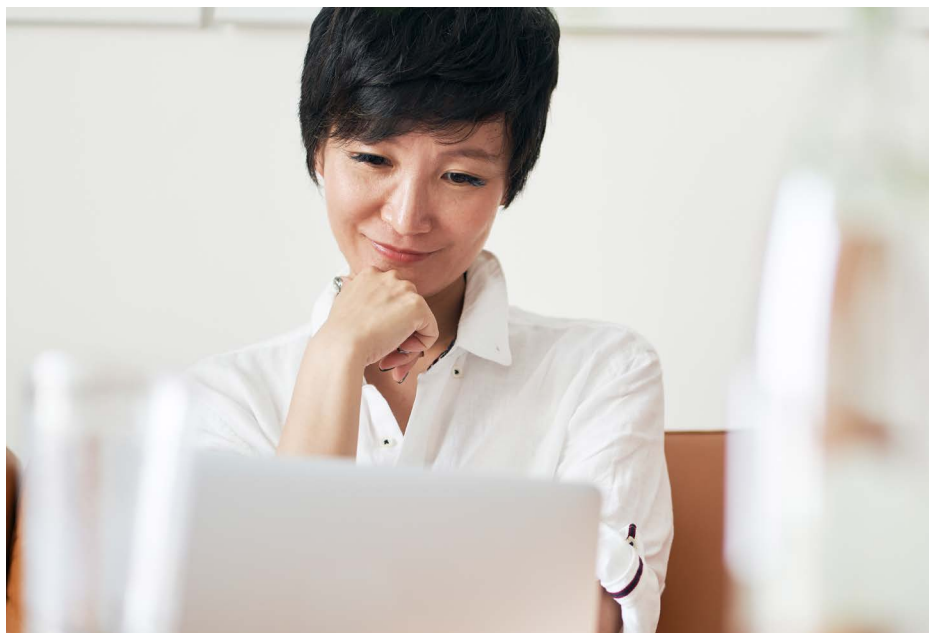
### Open entry route

**(CertHE only):** No

prior academic or work experience is needed to study the CertHE.

On completion, you can progress on to the LLB (Hons) Law with Business.

# LAW WITH CRIMINOLOGY



Bring your interests in the English legal system and criminal behaviour together with our LLB (Hons) Law with Criminology. Develop key critical thinking skills perfect for working in either field and gain extensive knowledge of sociological criminology and crime data. You can also study our CertHE – the perfect step to a full degree.

## OUR LAW WITH CRIMINOLOGY COURSES

Qualification	Duration
LLB (Hons) Law with Criminology	4 years
CertHE Law with Criminology	16 months

**Study mode:** online and part-time

### Level 4 modules

Legal Skills and Context - 30 credits<sup>▲</sup>

Criminal Law - 30 credits<sup>▲</sup>

Public Law - 30 credits<sup>▲</sup>

Introduction to Criminology - 15 credits<sup>▲</sup>

One optional module (15 credits): Crime and Society / Dealing with Offending Behaviour / Justice and Punishment

### Level 5 modules

Contract Law - 30 credits<sup>▲</sup>

Law of Tort - 30 credits<sup>▲</sup>

Land Law - 30 credits<sup>▲</sup>

Criminology - 15 credits<sup>▲</sup>

One optional module (15 credits): Forensic and Criminal Psychology / Criminal Investigation / Youth Crime and Justice / Prisons and Penology / Probation and Community Justice

### Level 6 modules

European Union Law - 15 credits<sup>▲</sup>

Equity and Trusts - 15 credits<sup>▲</sup>

Wills and the Administration of Estates - 15 credits<sup>▲</sup>

Criminal Behaviour and Deviance - 15 credits<sup>▲</sup>

Optional modules worth 60 credits: Final Year Research Project (30 credits) / Victimology and Criminal Victimization (15 credits) / Criminal Justice in the Information Age: Cyber Crime and Security (15 credits) / The Economics of Crime (15 credits) / Policing (15 credits)

## CAREER PROSPECTS

A law qualification will prepare you well for a career in finance, human resource, management and education – while experience in criminology will serve you well in roles within the prison system, criminal justice or the police.

**For more information, visit [online.essex.ac.uk](http://online.essex.ac.uk)**

## ENTRY REQUIREMENTS

### Academic entry route:

You must have three A-levels or equivalent.

### Work experience entry route:

You must have GCSE Maths and English at grade C or above, or equivalent; plus three years' relevant work experience.

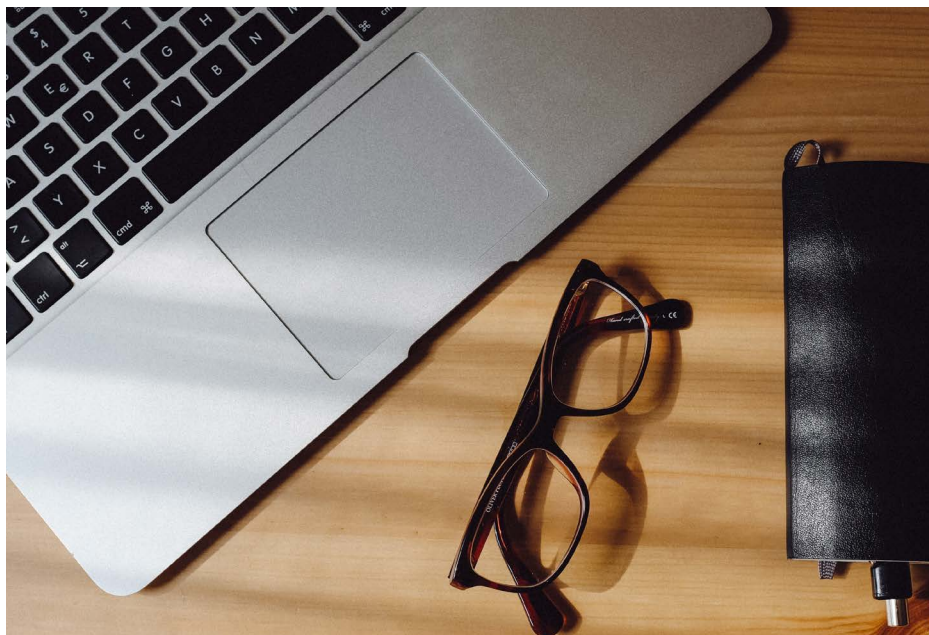
### Open entry route

**(CertHE only):** No prior academic or work experience is needed to study the CertHE. On completion, you can progress on to the LLB (Hons) Law with Criminology.

<sup>▲</sup> Core module (must be passed in order to achieve the award)

<sup>†</sup> Optional module (choose one for levels 4 and level 5, and equalling 60 credits at level 6)

# LAW WITH PSYCHOLOGY



How does the legal system affect the way people think and behave? Discover the answers on our LLB (Hons) Law with Psychology. You'll learn about criminal law and public law, along with theories applied to social psychology and the ethical framework developed by the British Psychological Society.

## OUR LAW WITH PSYCHOLOGY COURSES

Qualification	Duration
LLB (Hons) Law with Psychology	4 years
CertHE Law with Psychology	16 months

**Study mode:** online and part-time

### Level 4 modules

Legal Skills and Context - 30 credits<sup>▲</sup>

Criminal Law - 30 credits<sup>▲</sup>

Public Law - 30 credits<sup>▲</sup>

Introduction to Social Psychology - 15 credits<sup>▲</sup>

One optional module 15 credits<sup>†</sup>: Introduction to Cognitive Psychology / Personality and Intelligence

### Level 5 modules

Contract Law - 30 credits<sup>▲</sup>

Law of Tort - 30 credits<sup>▲</sup>

Land Law - 30 credits<sup>▲</sup>

Psychological Development through the Lifespan 15 credits<sup>▲</sup>

One optional module 15 credits<sup>†</sup>: Biological Psychology / Reasoning and Decision-Making / Forensic Psychology

### Level 6 modules

European Union Law - 15 credits<sup>▲</sup>

Equity and Trusts - 15 credits<sup>▲</sup>

Wills and the Administration of Estates - 15 credits<sup>▲</sup>

Critical Social Psychology - 15 credits<sup>▲</sup>

Optional modules worth 60 credits<sup>†</sup>: Final Year Research Project (30 credits) / Developmental Science (15 credits) / Occupational Psychology (15 credits) / Investigative Psychology (15 credits) / Clinical and Counselling Psychology (15 credits)

<sup>▲</sup> Core module (must be passed in order to achieve the award)

<sup>†</sup> Optional module (choose one for levels 4 and level 5, and equalling 60 credits at level 6)

## CAREER PROSPECTS

Your legal knowledge will be well suited in roles across finance, human resources, management, education, and the local and central government. Meanwhile, your psychology skills will be ideal for a career in security, healthcare, criminal justice or the civil service.

**For more information, visit [online.essex.ac.uk](http://online.essex.ac.uk)**

## ENTRY REQUIREMENTS

### Academic entry route:

You must have three A-levels or equivalent.

### Work experience entry route:

You must have GCSE Maths and English at grade C or above, or equivalent; plus three years' relevant work experience.

### Open entry route

**(CertHE only):** No prior academic or work experience is needed to study the CertHE. On completion, you can progress on to the LLB (Hons) Law with Psychology.

# HEALTH COURSES



If you're interested in driving positive change then our health programmes are for you. Healthcare management brings health and business together to give you an understanding of global issues and practices, so you can explore solutions and build transferable skills applicable for a range of leadership roles.

## OUR HEALTH COURSES

BSc (Hons) Healthcare Management	360 credits
CertHE Healthcare Management	120 credits

# HEALTHCARE MANAGEMENT



**Are you ready to make a difference? By studying our BSc (Hons) you'll develop the knowledge and practical skills required to improve patient care, effectively manage projects and implement effective business strategies in a healthcare organisation. Our CertHE is also the ideal gateway to entering this field and can be studied in as little as 16 months.**

## OUR HEALTHCARE MANAGEMENT COURSES

Qualification	Duration
BSc (Hons) Healthcare Management	4 years
CertHE Healthcare Management	16 months

**Study mode:** online and part-time

### Level 4 modules

Introduction to Healthcare Management -15 credits

Global Health -15 credits

Business and Management Skills -15 credits

Introduction to Finance -15 credits

Human Resource Management -15 credits

Health, Society and Public Policy -15 credits

Personal and Professional Development 1- 30 credits

### Level 5 modules

Public Health -15 credits

Financial Decision Making - 15 credits

Leadership and Managing Teams -15 credits

Introduction to Healthcare Informatics -15 credits

Project Management - 15 credits

Introduction to Health Economics -15 credits

Personal and Professional Development 2 - 30 credits

### Level 6 modules

Research Methods in Healthcare - 15 credits

Comparative Health Systems - 15 credits

Business Strategy - 15 credits

Health Innovation -15 credits

Occupational Psychology - 15 credits

Contemporary Issues in Practice - 15 credits

Healthcare Management Dissertation - 30 credits<sup>▲</sup>

## CAREER PROSPECTS

A qualification in Healthcare Management will prepare you for roles across a diverse range of healthcare settings – whether that's in public, private or community health – as well as in hospital, project or programme management.

**For more information, visit [online.essex.ac.uk](http://online.essex.ac.uk)**

## ENTRY REQUIREMENTS

### Academic entry route:

You must have three A-levels or equivalent.

### Work experience entry route:

You must have GCSE Maths and English at grade C or above, or equivalent; plus three years' relevant work experience.

### Open entry route

**(CertHE only):** No prior academic or work experience is needed to study the CertHE. On completion, you can progress on to the BSc (Hons) Healthcare Management.

<sup>▲</sup> Core module (must be passed in order to achieve the award)

# PSYCHOLOGY COURSES



Explore one of the most thought-provoking subjects with us. Designed and run by industry experts, our psychology courses give you the key transferable skills and knowledge to help you enhance your employability within psychology and related fields.

## OUR PSYCHOLOGY COURSES

BSc (Hons) Psychology	360 credits
CertHE Psychology	120 credits
BSc (Hons) Business Psychology	360 credits
CertHE Business Psychology	120 credits
BSc (Hons) Criminal Psychology	360 credits
CertHE Criminal Psychology	120 credits

# PSYCHOLOGY



The CertHE Psychology is the perfect place to begin experiencing a whole new world and also allows you to study our BSc (Hons) Psychology, one of the few 100% online programmes accredited by the British Psychological Society (BPS). Throughout your academic journey, you'll be able to tailor your path and gain insights into an area of your interest.

## OUR PSYCHOLOGY COURSES

Qualification	Duration
BSc (Hons) Psychology	4 years
CertHE Psychology	16 months

**Study mode:** online and part-time

### Level 4 modules

Fundamentals of Effective Learning in Psychology  
15 credits<sup>▲</sup>

Introduction to Social Psychology - 15 credits<sup>▲</sup>

Personality and Intelligence - 15 credits<sup>▲</sup>

Introduction to Cognitive Psychology - 15 credits<sup>▲</sup>

Psychology and the media - 15 credits<sup>▲</sup>

Mental Health, Stress and Well-being - 15 credits<sup>▲</sup>

Introduction to Research Methods - 30 credits<sup>▲</sup>

### Level 5 modules

Biological Psychology - 15 credits<sup>▲</sup>

Advanced Cognitive Psychology - 15 credits<sup>▲</sup>

Individual Differences, Emotions and Behaviour  
15 credits<sup>▲</sup>

Reasoning and Decision-Making - 15 credits<sup>▲</sup>

Quantitative Psychology - 15 credits<sup>▲</sup>

Psychological Development through the Lifespan  
15 credits<sup>▲</sup>

Forensic Psychology - 15 credits<sup>†</sup>

Health Psychology - 15 credits<sup>†</sup>

Educational Psychology - 15 credits<sup>†</sup>

Qualitative Research Methods - 15 credits<sup>▲</sup>

### Level 6 modules

Critical Social Psychology - 15 credits<sup>▲</sup>

Developmental Science - 15 credits<sup>▲</sup>

Occupational Psychology - 15 credits

Psychology of Sport and Exercise - 15 credits

Investigative Psychology - 15 credits

Clinical and Counselling Psychology - 15 credits

Final Psychology Project - 30 credits<sup>▲</sup>

<sup>▲</sup> Core module (must be passed in order to achieve the award) <sup>†</sup> Optional module CertHE (Level 4 modules only)

## CAREER PROSPECTS

Upon completion of your course you'll have an extensive range of specialist careers to choose from, across clinical, educational, forensic, health and occupational psychology. You could also pursue a career in related sectors such as counselling, civil service, research, healthcare, security, education and business.

**For more information, visit [online.essex.ac.uk](http://online.essex.ac.uk)**

## ENTRY REQUIREMENTS

### Academic entry route:

You must have three A-levels or equivalent.

### Work experience entry route:

You must have GCSE Maths and English at grade C or above, or equivalent; plus three years' relevant work experience.

### Open entry route

**(CertHE only):** No prior academic or work experience is needed to study the CertHE. On completion, you can progress on to the BSc (Hons) Psychology.

# BUSINESS PSYCHOLOGY



**Why do people behave the way they do in an organisation context? Find out on our Business Psychology courses. Explore core psychological theories, deep dive into social factors which influence people's lives and gain a deeper understanding of differences in behaviour.**

## OUR LAW WITH BUSINESS PSYCHOLOGY COURSES

Qualification	Duration
BSc (Hons) Business Psychology	4 years
CertHE Business Psychology	16 months
<b>Study mode:</b> online and part-time	

Please note, these courses are not accredited with the British Psychological Society (BPS).

### Level 4 modules

Fundamentals of Effective Learning in Psychology - 15 credits

Introduction to Social Psychology - 15 credits

Human Resources Management - 15 credits

Introduction to Cognitive Psychology - 15 credits

Fundamentals of Marketing - 15 credits

Introduction to Research Methods - 30 credits

One optional module (15 credits): Personality and Intelligence/Business and Management Skills

### Level 5 modules

Biological Psychology - 15 credits

Advanced Cognitive Psychology - 15 credits

Leadership and Managing Teams - 15 credits

Individual Differences, Emotions and Behaviours - 15 credits

Organisational Development and Change - 15 credits

Quantitative Psychology - 15 credits

Psychological Development through the Lifespan - 15 credits

Consumer Behaviour - 15 credits

### Level 6 modules

Critical Social Psychology - 15 credits

Developmental Science - 15 credits

Occupational Psychology - 15 credits

Business Strategy - 15 credits

International Marketing Strategy - 15 credits

Reasoning and Decision-Making in a Business Context - 15 credits

Final Psychology Project - 30 credits<sup>▲</sup>

<sup>▲</sup> Core module (must be passed in order to achieve the award)

## CAREER PROSPECTS

You'll gain the fundamental skills required for a career in human resources, business development, marketing, finance, business consultancy, staff development and organisational psychology.

**For more information, visit [online.essex.ac.uk](http://online.essex.ac.uk)**

## ENTRY REQUIREMENTS

**Academic entry route:** You must have three A-levels or equivalent.

**Work experience entry route:** You must have GCSE Maths and English at grade C or above, or equivalent; plus three years' relevant work experience.

**Open entry route (CertHE only):** No prior academic or work experience is needed to study the CertHE. On completion, you can progress on to the BSc (Hons) Business Psychology.

# CRIMINAL PSYCHOLOGY



**Curious about how criminals think and issues within the criminal justice system? Our courses have the answer you're looking for. From offender profiling to rehabilitation, discover the core topics that evolve around this rapidly expanding field and learn how different mental processes apply to criminal psychology.**

## OUR CRIMINAL PSYCHOLOGY COURSES

Qualification	Duration
BSc (Hons) Criminal Psychology	4 years
CertHE Criminal Psychology	16 months

**Study mode:** online and part-time

### Level 4 modules

Fundamentals of Effective Learning in Psychology - 15 credits<sup>▲</sup>

Introduction to Social Psychology - 15 credits<sup>▲</sup>

Introduction to Cognitive Psychology - 15 credits

Introduction to Research Methods - 30 credits<sup>▲</sup>

Crime and Society - 15 credits<sup>▲</sup>

Introduction to Offender Profiling - 15 credits<sup>▲</sup>

One optional module (15 credits each)<sup>†</sup>: Dealing with Offending Behaviour / Personality and Intelligence

### Level 5 modules

Biological Psychology - 15 credits<sup>▲</sup>

Advanced Cognitive Psychology - 15 credits<sup>▲</sup>

Psychological Development through the Lifespan 15 credits<sup>▲</sup>

Quantitative Psychology - 15 credits<sup>▲</sup>

Individual Differences, Emotions and Behaviours 15 credits<sup>▲</sup>

Forensic Psychology - 15 credits<sup>▲</sup>

Two optional modules (15 credits each)<sup>†</sup> from:  
Criminology / Risk Assessment and Management / Criminal Investigation / Youth Crime and Justice / Prisons and Penology / Substance Misuse and Crime / Probation and Community Justice

### Level 6 modules

Critical Social Psychology - 15 credits

Developmental Science - 15 credits

Investigative Psychology - 15 credits

Final Criminal Psychology Project - 30 credits<sup>▲</sup>

Criminal Behaviour and Deviance - 15 credits\*

Victimology and Criminal Victimisation - 15 credits

One optional module (15 credits)<sup>†</sup>: Policing / Economics of Crime / Criminal Justice in the Information Age

## CAREER PROSPECTS

On completion of your course, you'll be well prepared for careers within the criminal justice system, as well as security, marketing, research, academia and business.

**For more information, visit [online.essex.ac.uk](http://online.essex.ac.uk)**

## ENTRY REQUIREMENTS

### Academic entry route:

You must have three A-levels or equivalent.

### Work experience entry route:

You must have GCSE Maths and English at grade C or above, or equivalent; plus three years' relevant work experience.

### Open entry route

**(CertHE only):** No prior academic or work experience is needed to study the CertHE. On completion, you can progress on to the BSc (Hons) Criminal Psychology.

<sup>▲</sup> Core module (must be passed in order to achieve the award)  
<sup>†</sup> Optional module  
CertHE (Level 4 modules only)

# COMPUTING COURSES



Stay at the forefront of technology with our undergraduate computer science courses. You'll cover the core computing aspects and explore the latest trends, including big data, cyber security and artificial intelligence. Take your career up a gear with this versatile qualification.

## OUR COMPUTING COURSES

BSc (Hons) Data Science	360 credits
CertHE Data Science	120 credits
BSc (Hons) Computer Science	360 credits
CertHE Computer Science	120 credits
BSc (Hons) Business and Computing	360 credits
CertHE Business and Computing	120 credits
BSc (Hons) Cyber Security	360 credits
CertHE Cyber Security	120 credits

# DATA SCIENCE



In today's data driven environment, demand is growing for data analysts who can manage huge amounts of data and extract valuable insights. Our BSc (Hons) Data Science explores a wide range of topics from object-oriented programming techniques and key aspects of SQL to text processing, indexing and querying. Upon completion, you'll have the in-depth knowledge and skills ready to pursue exciting data science roles across a range of sectors.

## OUR DATA SCIENCE COURSES

Qualification	Duration
BSc (Hons) Data Science	4 years
CertHE Data Science	16 months

**Study mode:** online and part-time

### Level 4 modules

Research and Professional Practice (15 credits) <sup>▲</sup>

Introduction to Maths and Statistics (15 credits) <sup>▲</sup>

Fundamentals of Programming (15 credits) <sup>\*</sup>

Object-Oriented Programming (15 credits) <sup>\*</sup>

Introduction to Data Modelling (15 credits) <sup>▲</sup>

Big Data Technologies (15 credits) <sup>▲</sup>

Data Mining and Machine Learning (15 credits) <sup>▲</sup>

Database Systems and Management (15 credits) <sup>▲</sup>

### Level 5 modules

Research and Professional Practice 2 (15 credits) <sup>▲</sup>

Introduction to Data Science (15 credits) <sup>▲</sup>

Computer Security (15 credits) <sup>\*</sup>

Introduction to AI (15 credits) <sup>\*</sup>

Linear Programming (15 credits) <sup>\*</sup>

Data Engineering (15 credits) <sup>▲</sup>

Data Visualisation and Communication (15 credits) <sup>▲</sup>

Cloud Computing for Data Science (15 credits) <sup>▲</sup>

### Level 6 modules

Information Retrieval (15 credits) <sup>\*</sup>

Natural Language Processing (15 credits) <sup>\*</sup>

Applied Statistics (15 credits) <sup>\*</sup>

Data Ethics and Leadership (15 credits) <sup>\*</sup>

Data Warehousing and Business Intelligence (15 credits) <sup>\*</sup>

Capstone Project (45 credits)

<sup>▲</sup> core module (must be passed in order to achieve the award)

<sup>\*</sup> compulsory

## CAREER PROSPECTS

Data science professionals boast high salaries and there's a strong demand for graduates with advanced technical skills and computing knowledge in this area. Our innovative data science degree prepares you for a wide range of roles across the sector – including Data Scientist, Engineer, Analyst or Administrator; Site Reliability Engineer; Machine Learning Engineer; and Business Intelligence Analyst.

**For more information, visit [online.essex.ac.uk](https://online.essex.ac.uk)**

## ENTRY REQUIREMENTS

### Academic entry route:

You must hold three A-levels or equivalent.

### Work experience entry route:

GCSE Maths and English at grade C or above, or equivalent, or at least three years' experience within the fields of IT, computer science or business

### Open entry route

**(CertHE only):** No prior academic or work experience is needed to study the CertHE. On completion, you can progress on to the BSc (Hons) Data Science.

# CYBER SECURITY



The ongoing threat of cyber-attacks on modern organisations has accelerated the need for cyber security experts. This undergraduate course delves into a wide range of interesting topics, from risk management for decision-making, to algorithms and how to protect sensitive data. On completion, you'll have the latest expertise to pursue a lucrative career in cyber security, forensic analysis or security management roles.

## OUR CYBER SECURITY COURSES

Qualification	Duration
BSc (Hons) Cyber Security	4 years
CertHE Cyber Security	16 months
<b>Study mode:</b> online and part-time	

### Level 4 modules

Research and Professional Practice (15 credits) <sup>▲</sup>

Introduction to Maths and Statistics (15 credits) <sup>▲</sup>

Fundamentals of Programming (15 credits) <sup>\*</sup>

Object-Oriented Programming (15 credits) <sup>\*</sup>

Fundamentals of Networks (15 credits) <sup>▲</sup>

Introduction to Cyber Security (15 credits) <sup>▲</sup>

Ethical Hacking Penetration Testing (15 credits) <sup>▲</sup>

Operating Systems Security (15 credits) <sup>▲</sup>

### Level 5 modules

Research and Professional Practice 2 (15 credits) <sup>▲</sup>

Software Engineering Fundamentals (15 credits) <sup>▲</sup>

Computer Security (15 credits) <sup>▲</sup>

Introduction to AI (15 credits) <sup>\*</sup>

Digital Forensics (15 credits) <sup>▲</sup>

Cryptography (15 credits) <sup>▲</sup>

Data Visualisation and Communication (15 credits) <sup>▲</sup>

Behavioural Cyber Security (15 credits) <sup>▲</sup>

### Level 6 modules

Capstone Project (45 credits) <sup>▲</sup>

Information Retrieval (15 credits) <sup>\*</sup>

Network Security (15 credits) <sup>\*</sup>

Data Ethics and Leadership (15 credits) <sup>\*</sup>

Information Security and Risk Management <sup>\*</sup>

Security Operations and Incident Response (15 credits) <sup>\*</sup>

<sup>▲</sup> core module (must be passed in order to achieve the award)

<sup>\*</sup> compulsory

## CAREER PROSPECTS

This dynamic cyber security degree prepares you for a wide variety of exciting career paths across the sector. You'll unlock roles such as Cyber Consultant or Officer; Information Security Officer; Security Architect, Engineer or Administrator; Penetration Tester; Forensic Analyst; or Cryptographer. This high-growth industry provides the ideal opportunity to accelerate your career and stay at the forefront of cyber security developments.

**For more information, visit [online.essex.ac.uk](https://online.essex.ac.uk)**

## ENTRY REQUIREMENTS

### Academic entry route:

You must hold three A-levels or equivalent.

### Work experience entry route:

GCSE Maths and English at grade C or above, or equivalent, or at least three years' experience within the fields of IT, computer science or business

### Open entry route

**(CertHE only):** No prior academic or work experience is needed to study the CertHE. On completion, you can progress on to the BSc (Hons) Cyber Security.

# COMPUTER SCIENCE



**Ready to level up in your career? Align your professional ambitions with the growing needs of our technology-driven world and study for a degree in computer science. From programming, maths, statistics and algorithms to the sub domains of cyber security, artificial intelligence, data science and enterprise IT management - you'll explore all the core aspects of computer science. The computer science industry continues to advance and offers a rewarding career path for graduates with relevant expertise.**

## OUR COMPUTER SCIENCE COURSES

Qualification	Duration
BSc (Hons) Computer Science	4 years
CertHE Computer Science	16 months

**Study mode:** online and part-time

### Level 4 modules

Research and Professional Practice (15 credits) <sup>▲</sup>

Introduction to Maths and Statistics (15 credits) <sup>▲</sup>

Fundamentals of Programming (15 credits) <sup>▲</sup>

Object-Oriented Programming (15 credits) <sup>▲</sup>

Introduction to Data Modelling (15 credits) <sup>▲\*</sup>

Web Application Development (15 credits) <sup>▲\*</sup>

Fundamentals of Networks (15 credits) <sup>▲\*</sup>

Digital Systems Fundamentals (15 credits) <sup>▲\*</sup>

### Level 5 modules

Research and Professional Practice 2 (15 credits) <sup>▲</sup>

Software Engineering Fundamentals (15 credits) <sup>▲</sup>

Application Programming (15 credits) <sup>▲</sup>

Data Structures and Algorithms (15 credits) <sup>▲</sup>

Web Application Programming (15 credits) <sup>▲</sup>

Introduction to AI (15 credits) <sup>▲</sup>

Computer Security (15 credits) <sup>▲</sup>

Introduction to Data Science (15 credits) <sup>▲</sup>

### Level 6 modules

Capstone Project (45 credits) <sup>▲</sup>

Advanced Programming (15 credits) <sup>\*</sup>

Information Retrieval (15 credits) <sup>\*</sup>

Natural Language Processing (15 credits) <sup>\*</sup>

Computer Vision (15 credits) <sup>\*</sup>

Network Security (15 credits) <sup>\*</sup>

<sup>▲</sup> core module (must be passed in order to achieve the award)

<sup>\*</sup> compulsory

## CAREER PROSPECTS

An undergraduate qualification in computer science gives you the expertise to enter a variety of exciting computing-related positions and stay at the forefront of this fast-moving industry. Roles include IT consultant; business, cyber security or information systems analyst; data analyst, scientist or administrator; cloud analyst, developer or engineer; software tester or engineer; web designer or developer; and DevOps analyst.

**For more information, visit [online.essex.ac.uk](http://online.essex.ac.uk)**

## ENTRY REQUIREMENTS

### Academic entry route:

You must hold three A-levels or equivalent.

### Work experience entry route:

You must have GCSE Maths and English at grade C or above, or equivalent; plus three years' experience within the fields of IT, computer science or business.

### Open entry route (CertHE only):

No prior academic or work experience is needed to study the CertHE. On completion, you can progress on to the BSc (Hons) Computer Science.

# BUSINESS AND COMPUTING



Digital innovation is transforming the business landscape and graduates with sound business and computing knowledge are highly sought-after. This exciting undergraduate course unpacks a wide range of topics – from management, marketing and finance to programming, statistics and data management. On completion, you'll have the latest expertise to pursue roles within business and computing sectors, level up in your career and unlock new professional opportunities.

## OUR BUSINESS AND COMPUTING COURSES

Qualification	Duration
BSc (Hons) Business and Computing	4 years
CertHE Business and Computing	16 months

**Study mode:** online and part-time

### Level 4 modules

Research and Professional Practice (15 credits) \*

Introduction to Maths and Statistics (15 credits) \*

Fundamentals of Programming (15 credits) ▲

Business and Management skills (15 credits) ▲

Introduction to Data Modelling (15 credits) \*

Business Environment (15 credits) \*

Fundamentals of Marketing (15 credits) \*

Introduction to Finance (15 credits) \*

### Level 5 modules

Research and Professional Practice 2 (15 credits) \*

Business Investigation (30 credits) \*

Consumer Behaviour (15 credits) \*

Operations Management (15 credits) \*

Introduction to AI (15 credits) \*

Computer Security (15 credits) \*

Introduction to Data Science (15 credits) \*

### Level 6 modules

Capstone Project (45 credits) \*

Advanced Programming (15 credits)

Information Retrieval (15 credits)

Natural Language Processing (15 credits)

Computer Vision (15 credits)

Network Security (15 credits)

Global Business Environment (15 credits)

Business Finance (15 credits)

Business Law (15 credits)

E-Business and Marketing (15 credits)

Strategic Human Resource Management (15 credits)

Business Strategy (15 credits) \*

▲ core module (must be passed in order to achieve the award)

\* compulsory

## CAREER PROSPECTS

An undergraduate qualification in computer science gives you the expertise to enter a variety of exciting computing-related positions and stay at the forefront of this fast-moving industry. Roles include IT consultant; business, cyber security or information systems analyst; data analyst, scientist or administrator; cloud analyst, developer or engineer; software tester or engineer; web designer or developer; and DevOps analyst.

**For more information, visit [online.essex.ac.uk](https://online.essex.ac.uk)**

## ENTRY REQUIREMENTS

### Academic entry route:

You must hold three A-levels or equivalent.

### Work experience entry route:

You must have GCSE Maths and English at grade C or above, or equivalent; plus three years' experience within the fields of IT, computer science or business.

### Open entry route

**(CertHE only):** No prior academic or work experience is needed to study the CertHE. On completion, you can progress on to the BSc (Hons) Business and Computing.



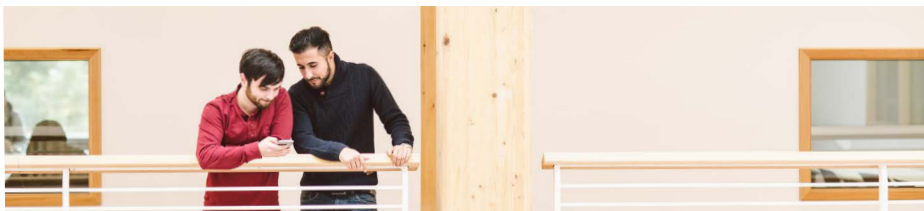
# IMPORTANT STUFF

**Applying for university may be one of the biggest decisions you'll ever make. To help make the process as simple as possible, we've put together all the information you need on how to fund your studies and how to apply.**

If you still have any questions at the end, our Admissions team will be more than happy to talk it over with a friendly call.

# FUNDING YOUR STUDIES

We know cost is a huge factor when you're considering studying online. That's why we have a range of funding options to choose from and a knowledge team ready to help you make the right decisions.



## Moneyback guarantee

As part of our 21-day moneyback guarantee, if you decide after three weeks that your course isn't for you, we'll give you a full refund. [Terms and conditions](#) apply.

## Payment options

UK nationals and EU nationals living in England can apply for a government backed undergraduate student loan. These are paid directly to you and you can choose how much to borrow (depending on the current maximum loan limit set by the Student Loans company).

Eligibility is determined by the Student Loans Company and requirements for those living in England include:

- being a UK national, or have settled or pre-settled status under the EU Settlement Scheme
- normally reside in England
- having lived in the UK, the Channel Islands or the Isle of Man for three years prior to starting your course

## [Click here to check your eligibility](#)

If you're ineligible for a tuition fee loan, we also provide a simple monthly payment plan to spread the cost of your fees. Alternatively, you may choose to pay the full fee up front, for which we'll offer you a 5% discount. That your course isn't for you, we'll give you a full refund. [Terms and conditions](#) apply.

## Loan repayments

You'll only [start repaying your loan](#) once your income is more than £27,295 a year and any outstanding balance will be written off after 30 years. If your circumstances change and your annual income drops below £27,295 a year, your repayments will stop.

\*Applicable only to students studying online and does not apply to students studying on campus.

## SCHOLARSHIPS AND DISCOUNTS

We're on a mission to make education more accessible to everyone, which is why we offer a range of options to reduce the cost of learning.

### Full payment discount

We'll apply a 5% discount\* if you choose to pay your full course fee upfront.

### International scholarship

Students residing in specific regions outside the UK may be eligible for a partial scholarship; please contact our Admissions team for further details.

### Corporate discount

If your organisation has 3 or more employees, or you are a not-for-profit organisation, you may be eligible to join our corporate partner list. Becoming a corporate partner entitles you and your employees to 10% tuition fee discount. This can be used in conjunction with our up-front payment discount, but not in conjunction with any other discounts and/or scholarships.



# STEPS TO JOIN ESSEX ONLINE



## 1 – Download a prospectus

[online.essex.ac.uk/prospectus](https://online.essex.ac.uk/prospectus)

Review our institution and online courses.

## 2 – Find the right course for you

**Consider your options**

Research our website and prospectus information.

## 3 – Talk with an admissions adviser

**You'll be designated a personal adviser that will contact you**

Get answers to all your questions, from course details, fees and funding options to entry requirements.

## 4 – Connect with a student ambassador

[online.essex.ac.uk/chat](https://online.essex.ac.uk/chat)

Get an authentic insight into the online student experience. Check out their blogs or start a chat with them.

## 5 – Submit an online application

[online.essex.ac.uk/apply](https://online.essex.ac.uk/apply)

It's free to apply and there are just five steps to complete the form — it's really that simple!

## 6 – Receive your application outcome

**You'll hear back within 2 working days after applying**

Our Admissions team will be in touch to let you know the decision — if successful you'll progress to the next step.

## 7 – Accept your offer

**Confirm your place on your course**

After accepting your offer you will need to pay your tuition fee deposit. You'll then be ready to start your course on your selected start date.

## 8 – Welcome to Essex Online

**Our Student Support team will invite you to welcome sessions**

They'll prepare you for your induction module and introduce you to the virtual learning environment.

# IMPORTANT INFORMATION

## About this prospectus

### When we might make changes to advertised courses and other information

This prospectus is intended to answer your questions about the academic provision on offer at University of Essex Online.

It may be necessary to make minor changes to our courses or Terms and Conditions. Reasons may include: to reflect changes in relevant laws and regulatory requirements; or to implement minor technical adjustments and improvements that ensure consistency with UK higher education sector practice and guidance, including complying with our obligations under the Quality Code. In exceptional circumstances it might be necessary to make more significant changes to a course our [Terms and Conditions](#). These may include:

- to increase tuition fees annually to proportionately reflect the costs associated with establishing and providing the course, such as any changes in higher education funding we may receive
- to correct errors
- by adding or removing optional modules
- if a third party such as the University of Essex or the Student Loans Company imposes changes on us, such as amending a policy or procedure

If a course change or closure is proposed in such circumstances, we'll take all reasonable steps to minimise disruption to students. This will include informing students of the changes in advance and giving them appropriate opportunity to comment on the proposals.

### No liability for matters outside our control

We cannot be held responsible for delays or inaccessibility outside our control. If our provision of courses is delayed or the learning platform is inaccessible due to an event outside our control, then we will contact you as soon as possible to let you know and will take steps to minimise the effect. Provided we do this, we will not be liable for delays or inaccessibility caused by the event, but if there is a risk of substantial delay or inaccessibility, you may contact us to end the contract and receive a refund for any part of a course you have paid for but not received.

## Admissions Policy

Applicants are considered in line with our [Admissions Policy](#).

## Terms and Conditions

Should your application be approved, we will send you an offer letter which will confirm the details of your course and start date. We will also send you a study plan outlining the indicative study duration for your course and a payment plan stating your net tuition fees.

The offer letter will also contain a link to our acceptance form. Acceptance of your application will take place when you follow the link and submit the form. At this point a contract will come into existence between you and us. By submitting the online acceptance form you are formally accepting your place on the course and start date as set out in your offer letter. Submission of the acceptance form also constitutes your agreement to our [Terms and Conditions](#).

## Key policies

All our policies are available at [online.essex.ac.uk/policies](http://online.essex.ac.uk/policies).

## Quality assurance and teaching excellence

University of Essex Online programmes are delivered by Kaplan Open Learning, an experienced online learning provider. We have been working in partnership with the University of Essex since 2007.

We are registered with the [Office for Students](#), meaning we meet its requirements for course quality, student support and more. It also includes meeting the expectations for standards and quality as set out in the [UK Quality code for higher education](#). Our dedication to offering our students a transformational education has led to Kaplan Open Learning being awarded the highest rating of gold in the Teaching Excellence Framework (2018). The gold rating demonstrates that the institution delivers consistently outstanding teaching, learning and outcomes for its students and is one of the highest quality found in the UK.

[Kaplan Open Learning](#) is part of Kaplan Inc., one of the world's largest and most diverse education providers. We encourage our students to transform their lives and careers by delivering and expanding our suite of innovative, industry-led and career enhancing higher education programmes.

## Complaints procedure

University of Essex Online welcomes applications from all candidates with the potential to succeed. Our admissions procedures are designed to ensure that all applicants are considered wholly based on their aptitudes, skills and abilities in relation to their chosen programme of study. However, we recognise that there may be occasions when applicants may feel that we have not adhered to our policies and the high standards we set ourselves. Our [Complaints and Appeals Policy for Applicants](#) describes the process to follow if an applicant believes that they have grounds for an appeal or complaint.

## Policy statement on equality and diversity

University of Essex Online recognises the value of diversity. We are committed to equality of opportunity for our students. We expect students

to be treated with dignity and respect solely on the basis of their merit, abilities and potential, regardless of age, disability, sexual orientation, family circumstances or other irrelevant distinction.

## Tuition fee increases during your studies

The full tuition fees are advertised on [our website](#). Full tuition fees include the cost of all core e-books. The applicable net tuition fees for your course will be shown on your payment plan. Tuition fees are reviewed annually. We reserve the right to increase tuition fees for current students in line with the RPI-X index and apply applicable sales taxes.

## Moneyback guarantee

We stand behind the academic quality of our online courses and are committed to ensuring that you are enrolled on a course that's right for you. However, if you decide your course is not for you within the first 21 days then you can withdraw from your programme without any cost.

You may end your contract with us and not be charged any tuition fees (or obtain a full refund if you have paid them) at any time up until 21 days from the start date of your course. [Terms and Conditions](#) apply.

## Photography

Every effort has been made to obtain permission to reproduce the images contained herein. Please [contact us](#) if you have any queries or any information relating to the images.

## Data for marketing purposes

Data has been selected for marketing purposes, but all claims are based on the most recent data available at the time of publishing.

Produced by the University of Essex Online Marketing team.

Please consider the environment before printing this document.

Last updated: 19 March 2026

**WE ARE ESSEX ONLINE.** IF YOU GIVE UP AT THE FIRST OBSTACLE, ESSEX ONLINE ISN'T FOR YOU. IF YOU WANT TO BE SPOON-FED A COURSE, ESSEX ONLINE ISN'T FOR YOU. IF YOU'RE WILLING TO **MAKE SACRIFICES AND WORK HARD**, ESSEX ONLINE IS FOR YOU. WE'RE ON THE SIDE OF PEOPLE WITH **GRIT AND PERSEVERANCE**. WE'RE ABOUT PEOPLE WHO ARE BOLD ENOUGH TO **CHALLENGE THE STATUS QUO**. WE'RE AFTER PEOPLE WHO DEFY THE NAYSAYERS, BECAUSE **CHALLENGING CONVENTION** IS IN ON OUR DNA. WE WANT PEOPLE WHO LOVE TO LEARN HOW BUT ALSO **WANT TO CHALLENGE WHY**. IT DOESN'T MATTER WHERE YOU'RE FROM, WHAT YOU DO OR WHAT STAGE IN LIFE YOU'RE AT. WE'RE INTERESTED IN HOW YOU WANT TO GROW AND **WHAT YOU WANT TO CHANGE**. WE'LL PROVIDE YOU WITH THE KNOWLEDGE AND SKILLS TO **TRANSFORM LIVES: YOURS AND THOSE AROUND YOU**. WE'LL CONNECT YOU WITH PEOPLE FROM ALL CORNERS OF THE WORLD – **A TRULY GLOBAL COMMUNITY**. SO, ARE YOU GOING TO SIT AND WATCH THE WORLD GO BY? OR DO YOU HAVE THE NERVE TO **FACE CHALLENGES HEAD ON?** WE'LL BE HERE EVERY STEP OF THE WAY HELPING YOU **REALISE YOUR AMBITIONS**. IF YOU'RE READY – **WELCOME HOME**.

[online.essex.ac.uk](https://online.essex.ac.uk)

+44 (0) 1206 489 358 | [enquiries@online.essex.ac.uk](mailto:enquiries@online.essex.ac.uk)