



BOLD. BRAVE. INSPIRED.



**Postgraduate
Prospectus**



University of Essex

Online

CONTENTS



CONTENTS

We are Essex Online	04
Our ambitions	06
Student community	08
Student stories	10
Get an insight	16
Online study experience	18
Student support	20
Essex Online benefits	22
Graduation	24
OUR COURSES	26
Business courses	28
Project management courses	42
Computing courses	46
Law courses	56
Education courses	60
Health courses	64
Psychology courses	76
Criminology courses	82
IMPORTANT STUFF	86
Funding your studies	88
Steps to join Essex Online	90
Important information	92

WE ARE ESSEX ONLINE



Welcome to Essex Online

Your age, background or previous experience shouldn't hold you back from achieving your goals. At University of Essex Online, we've been delivering the highest quality 100% online and part-time programmes with Kaplan Open Learning since 2007 – ensuring higher education is available to everyone.

Whether it's a Masters, Postgraduate Diploma or Postgraduate Certificate, all our qualifications are awarded by the University of Essex, a top UK university.

From day one until you graduate, you'll be supported in your journey by our Student Support team, Study Skills team and module tutors who are all dedicated to helping you get the most out of your course.

We're proud to have been at the helm of online education for over 15 years, so if you're ready for your next challenge, we're ready to welcome you home.

OUR AMBITIONS

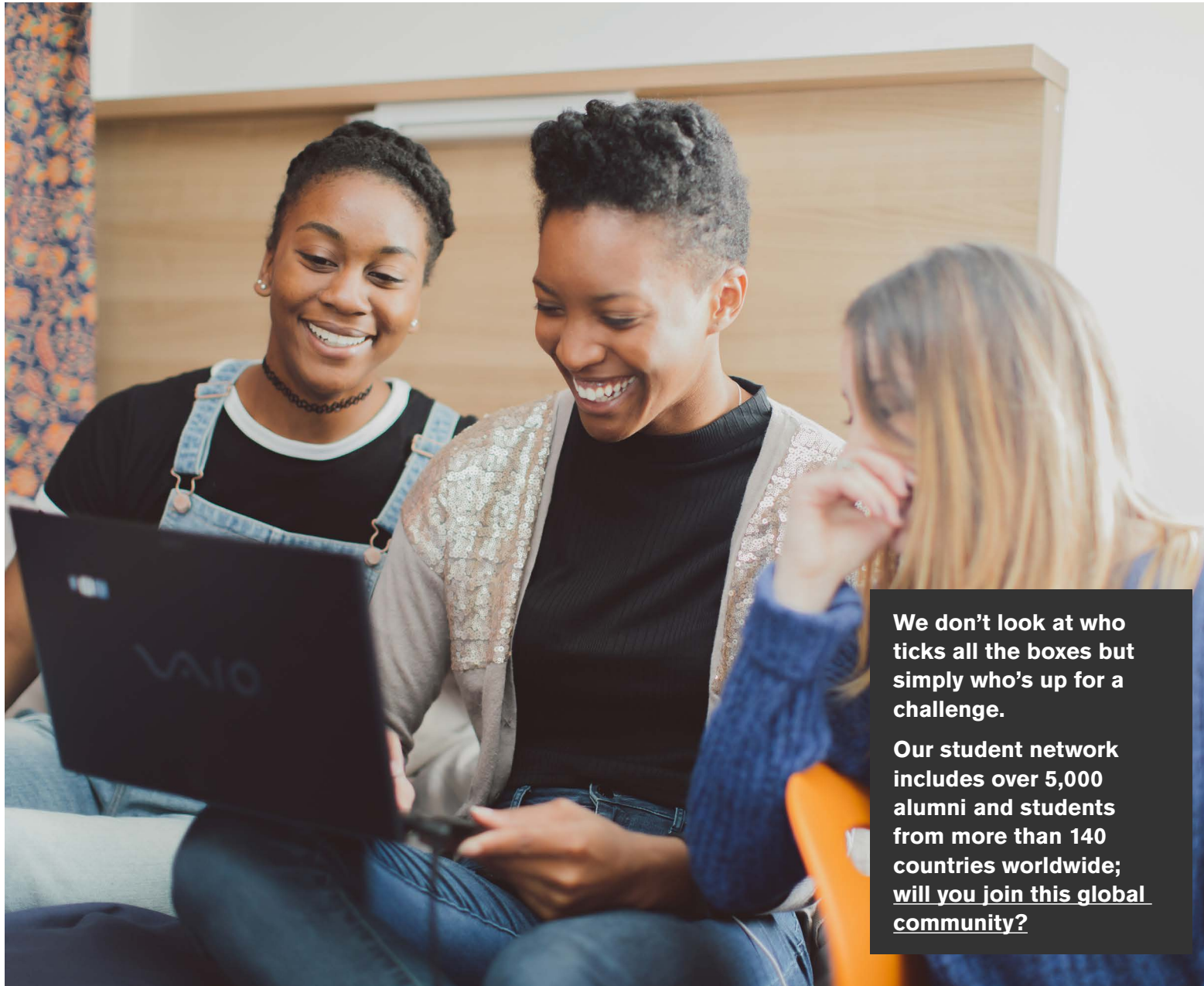
No matter what stage you're at in your life, there's always time to crave a personal challenge. Maybe you want to climb that career ladder, or step outside your comfort zone. Whatever your reasons for studying, Essex Online is the place for you.

We do things a bit differently here. An education with Essex Online will prepare you for the transformation you desire, whether it's personal or professional. We'll provide you with the skills, knowledge and support to guide you to success from day one and help you to unlock the power of your own ideas and make your mark on the world.

Essex Online welcomes everyone who wants to invest in their future, regardless of your circumstances. Whether you're working full-time, raising a family, travelling across the globe or simply want to pursue a pastime in retirement, there's no better time to fulfil your potential than right now. Whatever your reasons for taking this journey, we're ready to help you to your end goal – being a graduate from the University of Essex.



STUDENT COMMUNITY



We don't look at who ticks all the boxes but simply who's up for a challenge.

Our student network includes over 5,000 alumni and students from more than 140 countries worldwide; will you join this global community?

Ambitious

Our students aren't spoon-fed a degree; they earn it by committing to an intellectual, cultural and social journey.

Courageous

Stand out from the crowd and rise to the challenge. Our students aren't afraid to ask questions as many ideas deserve an answer, even the most unconventional ones.

Innovative and independent

Students who think outside the box tend to break intellectual boundaries and expand their knowledge. The autonomy to elevate ideas is 100% yours.

Multi-taskers

Many of our students have a variety of responsibilities outside the classroom. Whatever the circumstances, they still put their all into their studies.

Team players

Our courses require students to collaborate and share ideas with their classmates. There's no need to compete with others but simply learn from and inspire each other.

STUDENT STORIES



“There’s no reason why you can’t access more training in your 30s, 40s or 50s. Whatever it is you want to do, there are really no limits, and you should go for it.”



1 – Natalie enjoying a break from studying with her children. 2 – Natalie as a young mum. 3 – The birth of Natalie’s fourth child inspired her to return to study.

Natalie’s story

**From Nottingham, United Kingdom
MSc Criminology and Criminal Psychology student
Teenage mum to Masters student**

There’s a stereotype attached to teenage pregnancy: girl gets pregnant and claims benefits forever. Well, that’s not my story and it’s probably not the story for most others; however, society feeds us this idea that we’ll never amount to anything.

When I got pregnant the summer between Years 10 and 11, I doubt anyone was surprised. I could have got cracking GCSEs, but instead I messed about and didn’t make the most of my potential. I began an access course in September 2008, but I still wasn’t sure what I wanted to do in the future. I was interested in becoming a probation officer, having been inspired by my own youth offending worker during my teenage years.

Unfortunately, I didn’t have the necessary work experience or skills to pursue probation work, so I decided to study social work. I really enjoyed my degree – especially my final year placement at a fostering agency – and while I was having my fourth child, I had the idea of going back to university but didn’t know how to do it. That’s when I got an email from the University of Essex Online about 100% online Masters degrees. Well, I thought, “Sod it, I’m going to apply!” I chose to study Criminology and Criminal Psychology as I still wanted to become a probation officer and felt my social work degree would come in handy too.

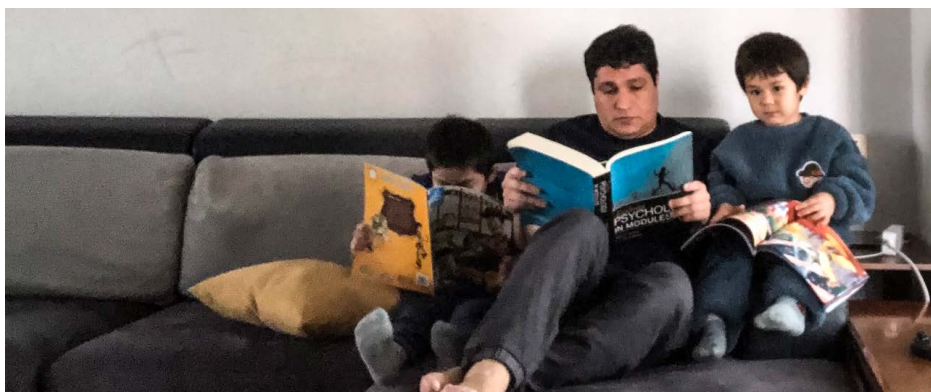
Since starting on my course, I’ve actually taken on a new role in victim services. Despite being qualified already, my degree gave me the confidence to go ahead and apply for the job, and I absolutely love it.

By overcoming my problems and getting on to my degree, I hope I can show others that anything is possible. You don’t have to be imprisoned by one line of work; if you decide at school that you want to be a teacher, then it doesn’t mean you can’t go on to do something else if you want to. There’s no reason why you can’t access more training in your 30s, 40s or 50s; there really are no limits and you should go for it.

STUDENT STORIES



“I decided online study would be the perfect option, so I began to research online universities that are prestigious and affordable. University of Essex Online was one of the universities I had shortlisted and I chose it because they offered a convenient set of pathways in education.”



1 – Adolfo at work at his school. 2 – When Adolfo isn't working or studying, he likes to spend quality time with his wife and children.

Adolfo's story

**From Iquique, Chile but living in Xiamen, China
PG Dip Education student
Teacher planning to undertake a Masters for career progression**

Like many people from my home country of Chile, I was unhappy with my job and lifestyle, and decided to relocate. Friends told me that teaching English in Asia was very well-paid and I'd have the opportunity to explore beautiful, exotic locations.

At the time, the only entry requirement was to be fluent in spoken English. Without thinking too much about it, I packed my bag and bought a plane ticket to China – despite having zero experience in the job I was looking for, not knowing Mandarin or even how to stay in the country once my tourist visa expired!

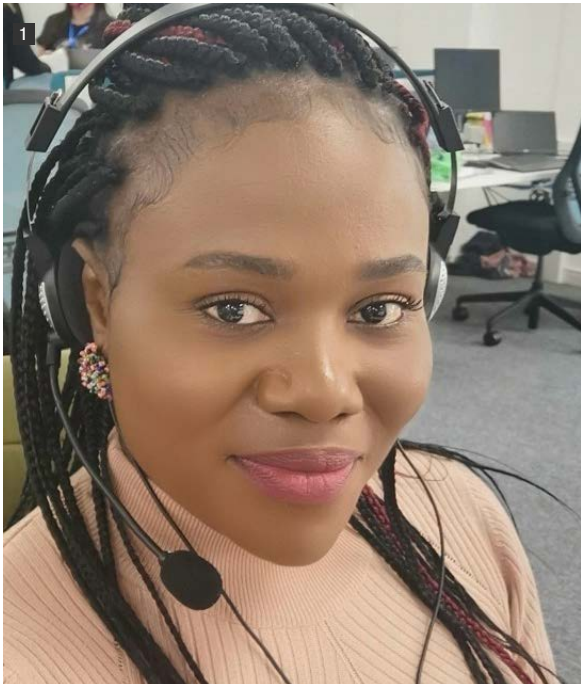
Luckily, I was hired by a great school where I spent a few years working and earning a salary three times more than I would back in Chile. I fell in love with the culture and found a real passion for teaching. Everything was great, but then China introduced new working visa regulations in response to the arrival of unqualified teachers looking for a job.

I started doing simple training in Teaching English as a Foreign Language (TEFL) and CMS (Chinese Montessori Society) Guide for a preschool. After a while, I realised that I'd need to invest more time in my education if I wanted to advance in my career and looked into a course that would fit around my work and family life.

I was delighted to be accepted on the Postgraduate Certificate in Education at the University of Essex Online, via the work experience entry route. I was happy to see many of my classmates were in the same situation as me, living and teaching abroad in Asia and Europe. I've now progressed on to the Postgraduate Diploma and I can say my study experience has been excellent. I plan to study the Master of Education, which is one of the requirements to becoming a Director or Vice-Principal at an international school.

The possibility to change your life is more tangible than you think. In fact, studying online isn't just an attractive option for teachers; many of my friends have found online study beneficial to their careers as software developers, lawyers, engineers and more. So if you're working abroad in another country, an online qualification is a great way to increase your career options and open up paths to achieve your goals.

STUDENT STORIES



“I decided to study with the University of Essex Online due to the course content, employability prospects, flexible start dates and because the alumni I had spoken to had nothing but good things to say.”



1 – Josephine is a nurse juggling online study with being a mum. 2 – Josephine at work as an Infection Prevention and Control Nurse (IPCN).

Josephine's story

**From Ghana, West Africa but living in Kent, United Kingdom
MSc Infection Control student
Nurse specialising in her field**

I've been a qualified registered general nurse since 2010, working across various healthcare settings, and became an Infection Prevention and Control Nurse (IPCN) in 2018. While in this role, I wished to become a specialist in my field and started looking into studying a Masters.

The decision to study at Masters level didn't come lightly, since I'd be juggling my course with working full-time, being a mum and running my own part-time business. However, I realised the course would be hugely beneficial to both my personal and professional development. In fact, when I began a new role in 2021 I was asked to pursue a Masters degree!

While doing my research, I found that only a handful of universities offered MSc Infection Control for online study. I decided to study with the University of Essex Online due to the course content, employability prospects, flexible start dates and because the alumni I had spoken to had nothing but good things to say. My Admissions Adviser was brilliant and helped me throughout the entire application process, ensuring all my questions were answered.

Since starting my course, I've come to realise how easy online learning is. Lectures are usually in the evenings which is convenient for me but on the rare occasion I do have to miss them, I can access recorded sessions 24/7 via the Virtual Learning Environment (VLE). Tutors are also very welcoming and on-hand to answer questions on coursework or the course in general.

It's clear the University of Essex Online cares about students and there's always someone available to help, whether that's by phone or email. I can't recommend the University enough to friends and family!

ONLINE STUDY EXPERIENCE



Virtual learning platform

Every course is delivered via our very own virtual learning environment (VLE). It's accessible 24/7, so wherever you are in the world and whatever the time, you can log in access your study materials whenever you need.

Lecturecasts

Your course content is delivered via contemporary lecturecasts, allowing you to interact with multimedia content and check your understanding via engaging activities.

Discussion forums

Regular discussion forums are ideal for exploring your course matter, sharing your experiences and learning from fellow students.

Live sessions

Tutors host regular live sessions throughout your modules, giving you the opportunity to ask questions and discuss course materials in more depth.

While we encourage you to attend our live sessions, we understand this isn't always possible with other commitments. That's why these sessions are recorded for you to watch at a convenient time. There are also other opportunities to ask your tutor questions and interact with peers.

Online resources

As well as free core textbooks, you'll also enjoy access to the University of Essex eLibrary which features a huge range of academic texts and journals.

Assessments

There's no need to worry about getting to an exam centre. All your assessments will be made online and include written assignments that can be completed from the comfort of your home.

Our state-of-the-art VLE has been designed specifically to deliver 100% online courses. The modules are presented to students in a flexible, interactive and engaging format which promotes collaborative learning and helps students achieve their goals. Throughout their course, students also have access to a wide range of support materials and services to help with academic writing, study skills, career development and much more.

Stephen Livesey
Director of Learning Technology

STUDENT SUPPORT

Studying independently doesn't mean studying alone. Throughout your course, a range of teams will be ready to help, from academic to pastoral and technical support. Plus, you'll have plenty of opportunities to collaborate, discuss and debate with your tutors and fellow classmates.



Academic support

Our tutors are experts in their field and will be happy to help with any academic queries via regular live sessions and constructive feedback on your assignments.

Study skills

Our Study Skills team are here to help improve your academic standing. They offer enhanced support with the finer aspects of academic writing, referencing, academic integrity and more.

Disability support

If you have any form of disability, mental health condition, or learning difficulty, there are adjustments we might be able to make for you. We recommend you let us know about any disability or condition you have during the application process; so our Disability Support team can consider any appropriate adjustments before you start your course.

Student Welfare

Student wellbeing and mental health are both vitally important, and our Student Welfare and Safeguarding Officers are on hand to address any such concerns and help ensure you're in the best place to study.

Admissions advisers

You'll be assigned a dedicated admissions adviser as soon as you enquire or apply to one of our courses. They'll guide you through the entire application process and will be on-hand to help with any practicalities, as well as answer questions.

Student advisers

You will be provided a dedicated team of student support advisers appropriate to your chosen course. Your team will welcome you on your first day and be with you throughout your entire student journey – offering advice and ensuring you get the most out of your studies.

Finance support

Our Finance Support team are available to provide you with up-to-date advice on your tuition fees, payments, and student loans – ensuring you're ready to progress easily through your course.

We understand the challenges online students face. That's why you'll have access to a range of supportive services throughout your time at the University of Essex Online. From Student Support and Study Skills to Finance Support and Disability Support; whatever your situation, all our teams are here to provide tailored support to enhance your learning journey.

Katy Bailey
Director of Student Services

ESSEX ONLINE BENEFITS



Flexible study approach

Whether you have a full-time job, a busy family life or an action-packed travel schedule, our online and part-time courses utilise the latest technology to help you fit studying around your busy lifestyle.

Affordable education

Student loans are available to eligible students based in England. For those self-funding their studies, we offer flexible monthly payment plans, plus a range of discounts and scholarships.

Quick feedback turnaround

Throughout the course we'll provide feedback on submitted assignments within seven days, so you'll always have an up-to-date perspective on how you're doing.

Small class sizes

To make sure you get the best possible level of support from our academic staff, we keep classes small.



Free trial period

Within the first 21 days of signing up, if you feel the course isn't right for you or you change your mind, you can receive a full refund.

(Terms and Conditions apply).

Entry requirements

We consider all applications on an individual basis, taking into account your academic achievements, work experience and professional background – as well as offering entry routes for those without these. For more detailed information on specific course entry requirements, please check the relevant course page in this prospectus.

Regular intakes

At University of Essex Online, we have multiple start dates throughout the year – allowing you study when it best suits you. You can find the start dates for your course on our website.

Apply now

Excited to get started?
Start an online application here.



Now I know that pursuing my dream of having a Masters in public health will be fulfilled and I'm going to be proud of having a degree from such a great university.

Monique Helou
Master of Public Health (MPH)

GRADUATION



Upon successful completion of your course, you'll be invited to attend a graduation ceremony at the University of Essex Colchester Campus.



Celebrate your achievement

Completing your degree is a very special milestone in your life. Graduation is an opportunity to celebrate your hard work and dedication while also recognising and acknowledging the support received from family, friends and classmates.

Meet your tutors and student advisers

Replace with: For our graduates, this is likely to be the first they meet in-person the staff members who have been integral to their study.

Explore Essex's campus

The beautiful University of Essex Colchester Campus is home to 16 academic departments and schools, and over 15,000 students. Graduation takes place in July.

Receive your certificate

You'll receive the same certificate as students who studied on campus – the mode of study is only mentioned on your academic transcript with your final grades.



[Watch our previous graduation videos](#)

Coming [to graduation] to put faces to names is one of the highlights for me.

Mojibola Oluseson
MSc Criminology and Criminal Psychology graduate

OUR COURSES

Whatever your passion, explore it with the University of Essex Online. All our courses are delivered by Kaplan Open Learning, a highly experienced online learning provider. They've been designed with online delivery in mind from the very beginning and are taught by leading industry experts.

PG Cert

Our postgraduate certificates have an indicative study duration of eight months, making them our shortest courses. They're the perfect first step towards studying a Masters degree.

PG Dip

With an indicative study duration of 16 months, our part-time postgraduate diplomas are ideal for career development or as preparation for a full Masters degree.

Masters

Our Masters are fully recognised postgraduate degrees, with an indicative study duration of two years. They'll help you develop essential skills favoured by employers and give you a solid understanding of your chosen subject area.



Tasters available – If you see this icon on a page, it means we have a taster lecturecast for this course.

BUSINESS COURSES



Our expertly designed courses deliver the key knowledge any savvy business professional needs. Choose a particular aspect of business – from management, human resources and finance, to digital marketing, analytics and supply chain management – and develop your communication, problem-solving and decision-making skills through our innovative teaching style.

OUR BUSINESS COURSES

Master of Business Management (MBM)
180 credits

PG Dip Business Management
120 credits

PG Cert Business Management
60 credits

MSc Business and Management
(Business Analytics) – 180 credits

PG Dip Business and Management
(Business Analytics) – 120 credits

PG Cert Business and Management
(Business Analytics) – 60 credits

MSc International Human Resource
Management – 180 credits

PG Dip International Human Resource
Management – 120 credits

PG Cert International Human Resource
Management – 60 credits

MSc Global Digital Marketing
180 credits

PG Dip Global Digital Marketing
120 credits

PG Cert Global Digital Marketing
60 credits

OUR BUSINESS COURSES

MSc Supply Chain Management and
Global Logistics – 180 credits

PG Dip Supply Chain Management and
Global Logistics – 120 credits

PG Cert Supply Chain Management and
Global Logistics – 60 credits

MSc Business with Finance
180 credits

PG Dip Business with Finance
120 credits

MSc Leadership – 180 credits

PG Dip Leadership – 120 credits

PG Cert Leadership – 60 credits

BUSINESS MANAGEMENT



Our practical and comprehensive postgraduate business programmes allow you to examine real-world companies and develop skills essential to any successful manager. Improve your project management, leadership and financial knowledge while sharing ideas with fellow students from around the world.

OUR BUSINESS MANAGEMENT COURSES

Qualification	Duration
Master of Business Management (MBM)	2 years
PG Dip Business Management	16 months
PG Cert Business Management	8 months

Study mode: online and part-time

WHAT WILL I STUDY?

Module	MBM	PGDip	PGCert
Management: Principle and Practices (20 credits)	*	*	*
Leadership in Practice (20 credits)	*	*	†
Financial Decision Making (20 credits)	*	*	†
Economics for Managers (20 credits)	*	*	†
Marketing: Principles and Practices (20 credits)	*	*	†
Managing Across Cultures (10 credits)	†	†	
Project Management (10 credits)	†	†	
Human Resource Management (10 credits)	†	†	†
Human Resource Management in Context (10 credits)			†
Business Strategy (10 credits)	†	†	
Research Methods (20 credits)	▲		
Business and Management Research Report (40 credits)	▲		

ENTRY REQUIREMENTS

For the academic entry route, you must have an undergraduate degree from an approved institution, equivalent to a UK Honours degree, or a relevant professional qualification. For the work experience entry route, you must have at least three years' relevant work experience.

CAREER PROSPECTS

Candidates with the most advanced skills are highly desirable for senior positions. Roles within business management, banking, insurance, accountancy, finance, marketing, sales, retail or human resources would greatly benefit from the knowledge gained from this course.

WHY ESSEX ONLINE?

- Study at a university with over 15 years' experience delivering 100% online programmes
- Your certificate is awarded by the University of Essex's Essex Business School, ranked in the UK's top 25 for research quality (The Times and The Sunday Times Good University Guide 2019)
- Our business courses are designed with online delivery in mind – allowing you to study alongside work

* Compulsory module ▲ Core module (must be passed in order to achieve the award) † Optional module (choose 2 for MSc and PG Dip, choose up to 3 for PG Cert, equal to 40 credits.)

Ready to start? **Apply now!**

BUSINESS AND MANAGEMENT (BUSINESS ANALYTICS)



Data plays a pivotal role in business operations. This course will develop your analytical skills and empower you, as a manager, to make strategic decisions to improve performance in all areas of business – from marketing and sales to product development and beyond.

OUR BUSINESS AND MANAGEMENT (BUSINESS ANALYTICS) COURSES

Qualification	Duration
MSc Business and Management (Business Analytics)	2 years
PG Dip Business and Management (Business Analytics)	16 months
PG Cert Business and Management (Business Analytics)	8 months

Study mode: online and part-time

WHAT WILL I STUDY?

Module	MSc	PGDip	PGCert
Financial Decision Making (20 credits)	*	*	*
Data Management, Modelling and Design (20 credits)	▲	▲	▲
Statistics for Business (20 credits)	*	*	*
Project Management (10 credits)	*	*	
Data Visualisation and Interpretation (20 credits)	*	*	
Data Analytics for Managers (20 credits)	*	*	
Business Strategy (10 credits)	*	*	
Research Methods (20 credits)	▲		
Business and Management Research Report (40 credits)	▲		

ENTRY REQUIREMENTS

For the academic entry route, you must have an undergraduate degree from an approved institution, equivalent to a UK Honours degree, or a relevant professional qualification. For the work experience entry route, you must have at least three years' relevant work experience.

CAREER PROSPECTS

This course is ideal for those looking to bring a solid grounding in data analysis to their future career, whether as a manager, business owner or CEO, or within a data-specific role such as Data Officer, Finance Analyst, Marketing or Analyst.

WHY ESSEX ONLINE?

- 15 years delivering 100% online programmes
- Certificates are awarded by the University of Essex's Essex Business School, ranked in the UK's top 25 for research quality (The Times and The Sunday Times Good University Guide 2019)
- Our business courses are designed with online delivery in mind – so you can work alongside studying

* Compulsory module ▲ Core module (must be passed in order to achieve the award).

Ready to start? **Apply now!**

INTERNATIONAL HUMAN RESOURCE MANAGEMENT



Explore the various challenges tackled by international HR professionals, and learn how to effectively respond to issues, with our focused courses. You'll develop an awareness of how to customise your approach to managing individual employees, while also gaining an appreciation of the larger implications faced when creating and managing a HR strategy.

OUR INTERNATIONAL HUMAN RESOURCE MANAGEMENT COURSES

Qualification	Duration
MSc International Human Resource Management	2 years
PG Dip International Human Resource Management	16 months
PG Cert International Human Resource Management	8 months

Study mode: online and part-time

WHAT WILL I STUDY?

Module	MSc	PGDip	PGCert
Global Resource and Talent Management (20 credits)	*	*	*
Strategic Human Resource Development (20 credits)	*	*	*
Diversity Management in a Global Economy (20 credits)	*	*	*
Mentoring and Coaching for Organisational Effectiveness (20 credits)	*	*	*
Leadership and Management Development (20 credits)	*	*	*
Global Environment and People Management (20 credits)	*	*	
Research Methods (20 credits)	▲		
Business and Management Research Report (40 credits)	▲		

ENTRY REQUIREMENTS

For the academic entry route, you must have an undergraduate degree from an approved institution, equivalent to a UK Honours degree, or a relevant professional qualification. For the work experience entry route, you must have at least three years' relevant work experience.

CAREER PROSPECTS

After completing this course, you'll be well-positioned to succeed in a range of people management roles, such as Human Resources Manager, Human Resources Officer, Recruitment Consultant, Training and Development Officer, Employee Relations Adviser, Career Coach and Management Consultant.

WHY ESSEX ONLINE?

- Through course content and collaboration with fellow students around the world, you will gain a global outlook on human resources and the ability to succeed in national and international companies
- Our certificates are awarded by Essex Business School, part of the University of Essex, ranked in the UK's top 25 for research quality (The Times and The Sunday Times Good University Guide 2019)
- Our business courses are 100% online and part-time, meaning you can complete them around your existing career

* Compulsory module ▲ Core module (must be passed in order to achieve the award)

Ready to start? **Apply now!**

GLOBAL DIGITAL MARKETING



More digital platforms are constantly entering the marketing sector; learn how to optimise your use of them and reach your target audience on an international scale. You'll also gain an understanding of how to collect, analyse and deploy customer data in order to meet your strategic marketing objectives.

OUR GLOBAL DIGITAL MARKETING COURSES

Qualification	Duration
MSc Global Digital Marketing	2 years
PG Dip Global Digital Marketing	16 months
PG Cert Global Digital Marketing	8 months

Study mode: online and part-time

WHAT WILL I STUDY?

Module	MSc	PGDip	PGCert
Consumer Behaviour in the Digital Age (20 credits)	*	*	*
Digital Platforms, Channels and Campaigns (20 credits)	*	*	*
Digital Futures in Marketing (20 credits)	*	*	*
Corporate Communication (20 credits)	*	*	
Marketing Strategy and Management (20 credits)	*	*	
Data Analytics for Managers (20 credits)	*	*	
Research Methods (20 credits)	▲	▲	
Business and Management Research Report (40 credits)	▲	▲	

ENTRY REQUIREMENTS

For the academic entry route, you must have an undergraduate degree from an approved institution, equivalent to a UK Honours degree, or a relevant professional qualification. For the work experience entry route, you must have at least three years' relevant work experience.

CAREER PROSPECTS

After completing this course, you will be well-suited to roles such as Marketing Executive, Digital Brand Manager, Content Marketing Specialist, Community Manager, Marketing Strategist, SEO Specialist, Marketing Manager, Creative Director or Content Creator.

WHY ESSEX ONLINE?

- With over 15 years' experience, we're one of the longest-running providers of online business degrees
- Our certificates are awarded by Essex Business School, part of the University of Essex, a top 20 UK university (Guardian University Guide 2026)
- Connect with other students worldwide via discussion forums to build a successful global career

* Compulsory module ▲ Core module (must be passed in order to achieve the award)

SUPPLY CHAIN MANAGEMENT AND GLOBAL LOGISTICS



Explore each stage of the supply chain process in detail and gain the skills needed to succeed in global logistics. Your studies will be contextualised by following a simple T-shirt product throughout the supply journey – from procurement of raw materials to wearer – and you'll also delve into fascinating topics such as sustainability and the use of big data.

OUR SUPPLY CHAIN MANAGEMENT AND GLOBAL LOGISTICS COURSES

Qualification	Duration
MSc Supply Chain Management and Global Logistics	2 years
PG Dip Supply Chain Management and Global Logistics	16 months
PG Cert Supply Chain Management and Global Logistics	8 months

Study mode: online and part-time

WHAT WILL I STUDY?

Module	MSc	PGDip	PGCert
Core Concepts in Logistics, Operations and Supply Chain Management (20 credits)	▲	▲	▲
The Finance of Supply Chain Management (20 credits)	*	*	*
Global Procurement and Risk Management (20 credits)	*	*	*
Sustainable Supply Chain Management (20 credits)	*	*	
Supply Chain Analytics and Innovations (20 credits)	*	*	
Global Logistics and Transport Management (20 credits)	*	*	
Research Methods (20 credits)	▲		
Research Project (40 credits)	▲		

ENTRY REQUIREMENTS

For the academic entry route, you must have an undergraduate degree from an approved institution, equivalent to a UK Honours degree, or a relevant professional qualification. For the work experience entry route, you must have at least three years' relevant work experience.

CAREER PROSPECTS

Our graduates will be suited for roles within supply chain planning and design, warehouse management, procurement, freight transportation, inventory management and control, and distribution network design.

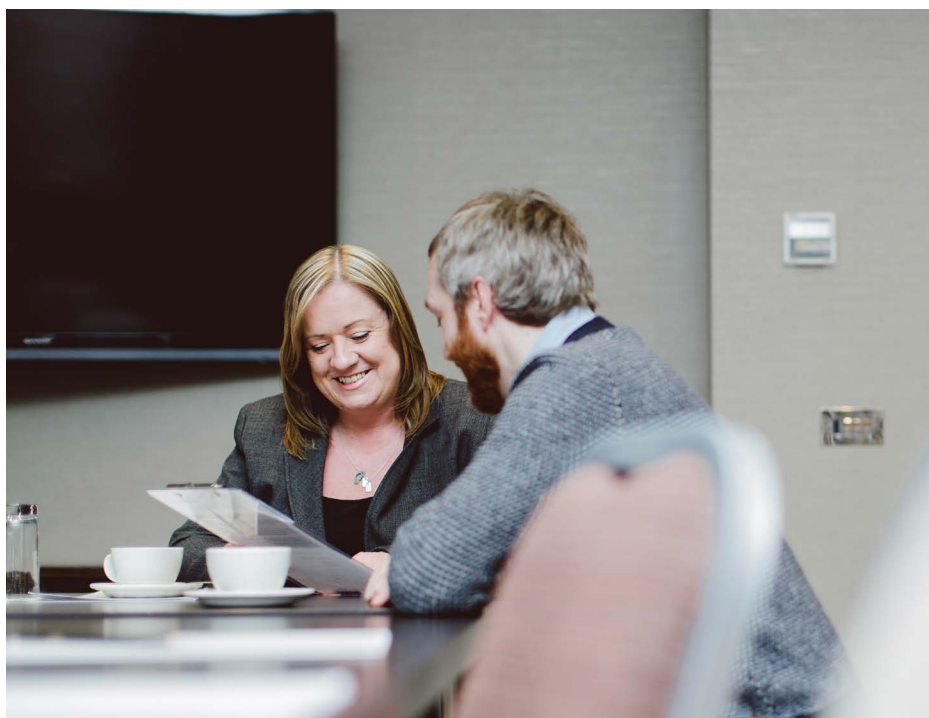
WHY ESSEX ONLINE?

- Over half our students are from overseas; you'll develop worldwide connections and gain a global point of view
- Your certificate will be awarded by Essex Business School, ranked in the UK's top 25 for research quality (The Times and The Sunday Times Good University Guide 2019)
- Our business courses are designed with online delivery in mind – you can complete our courses around your existing work

* Compulsory module ▲ Core module (must be passed in order to achieve the award)

Ready to start? **Apply now!**

BUSINESS WITH FINANCE



Want to succeed in business? Then a firm grasp of finance is essential. Our courses will give you a strong understanding of key financial management skills and economic topics, while improving your managerial and strategic skills.

OUR BUSINESS WITH FINANCE COURSES

Qualification	Duration
MSc Business with Finance	2 years
PG Dip Business with Finance	16 months

Study mode: online and part-time

WHAT WILL I STUDY?

Module	MSc	PGDip
Financial Management (20 credits)	▲	*
Management: Principles and Practices (20 credits)	*	*
Economics for Managers (20 credits)	*	*
Financial Decision Making (20 credits)	*	*
Project Management (10 credits)	*	*
Business Strategy (10 credits)	*	*
Leadership in Practice (20 credits)	†	†
Marketing: Principles and Practices (20 credits)	†	†
Human Resource Management (10 credits)	†	†
Human Resource Management in Context (10 credits)	†	†
Marketing Strategy and Management (20 credits)	†	†
Research Methods (20 credits)	▲	
Business and Management Research Report (40 credits)	▲	

ENTRY REQUIREMENTS

For the academic entry route, you must have an undergraduate degree from an approved institution, equivalent to a UK Honours degree, or a relevant professional qualification. For the work experience entry route, you must have at least three years' relevant work experience.

CAREER PROSPECTS

Although our courses are designed for those seeking employment in a high-level financial role, the skills you'll develop are also beneficial for roles within business management, banking, insurance, accountancy, marketing, sales, retail and human resources.

WHY ESSEX ONLINE?

- Over a decade of experience as an online learning provider
- We achieved the highest student satisfaction rating worldwide for online classroom experience in the Global Student Satisfaction Awards (GSSA 2021)
- No need to take a break – complete this course 100% online and part-time around your existing work

* Compulsory module ▲ Core module (must be passed in order to achieve the award) † Optional module (choose modules equal to 20 credits for both MSc and PG Dip)

LEADERSHIP



Do you aspire to become a leader and drive innovation in your industry? Stay ahead of the curve and develop the necessary skills to make dynamic business decisions, with our innovative leadership degree. You'll explore key topics such as the differences between leadership and management; sustainable business models and strategies; and leadership in a global context.

OUR LEADERSHIP COURSES

Qualification	Duration
MSc Leadership	2 years
PG Dip Leadership	16 months
PG Cert Leadership	8 months

Study mode: online and part-time

WHAT WILL I STUDY?

Module	MSc	PGDip	PG CERT
High Impact Leadership (20 credits)	▲	▲	▲
Leadership and Management Development (20 credits)	*	*	
Innovation and Entrepreneurship for Enterprise (20 credits)	*	*	*
Leadership for Sustainability (20 credits)	*	*	*
Data Analytics for Managers (20 credits)	*	*	
Leadership in Practice (20 credits)	*	*	
Research Methods (20 credits)	▲		
Business in Management Research Report (40 credits)	▲		

ENTRY REQUIREMENTS

For the academic entry route, you must hold an undergraduate degree from an approved institution, equivalent to a UK Honours degree; or a relevant professional qualification. For the work experience entry route, you'll need at least three years' relevant work experience.

CAREER PROSPECTS

A postgraduate qualification in leadership gives you the key skills and knowledge to accelerate your career, whether you're already in a leadership role or aspire to become a leader in any industry. Graduates will be prepared for a variety of leadership positions across industries such as marketing, computing and engineering. Additionally, you may wish to pursue consultancy roles or work in the not-for-profit sector.

WHY ESSEX ONLINE?

- Over a decade of experience as an online learning provider
- We achieved the highest student satisfaction rating worldwide for online classroom experience in the Global Student Satisfaction Awards (GSSA 2021)
- No need to take a break – complete this course 100% online and part-time around your existing work

* Compulsory module ▲ Core module (must be passed in order to achieve the award) † Optional module (choose modules equal to 20 credits for both MSc and PG Dip)

PROJECT MANAGEMENT COURSES



Eager to cultivate the necessary skills to effectively manage your team, time and resources? Our project management programmes will prepare you for your desired role, whether that's in management, consultancy, finance, marketing or sales. You can take your first steps into the discipline with our short PG Certificate and progress on to our PG Diploma, or study our full MSc Project Management.

OUR PROJECT MANAGEMENT COURSES

MSc Project Management	180 credits
PG Dip Project Management	120 credits
PG Cert Project Management	60 credits

PROJECT MANAGEMENT



Learn practical techniques and gain in-depth knowledge of best practices for managing projects of any size. Project management is essential to any business and by studying with us, you'll gain the transferable skills you need to stand out from the crowd in a competitive job market.

OUR PROJECT MANAGEMENT COURSES

Qualification	Duration
MSc Project Management	2 years
PG Dip Project Management	16 months
PG Cert Project Management	8 months

Study mode: online and part-time

WHAT WILL I STUDY?

Module	MSc	PGDip	PGCert
Management: Principle and Practices (20 credits)	*	*	*
Financial Decision Making (20 credits)	*	*	
Project Management Techniques (20 credits)	*	*	*
Management of Projects (20 credits)	*	*	*
Project Analytics (20 credits)	*	*	
Leading and Managing Project Teams (20 credits)	*	*	
Research Methods (20 credits)	▲		
Business and Management Research Report (40 credits)	▲		

ENTRY REQUIREMENTS

For the academic entry route, you must have an undergraduate degree from an approved institution, equivalent to a UK Honours degree, or a relevant professional qualification. For the work experience entry route, you must have at least three years' relevant work experience.

CAREER PROSPECTS

These courses will prepare you to succeed as a project management professional within specialist industries, such as healthcare or property. You could also pursue a wide range of management roles within consultancy, finance, marketing and sales.

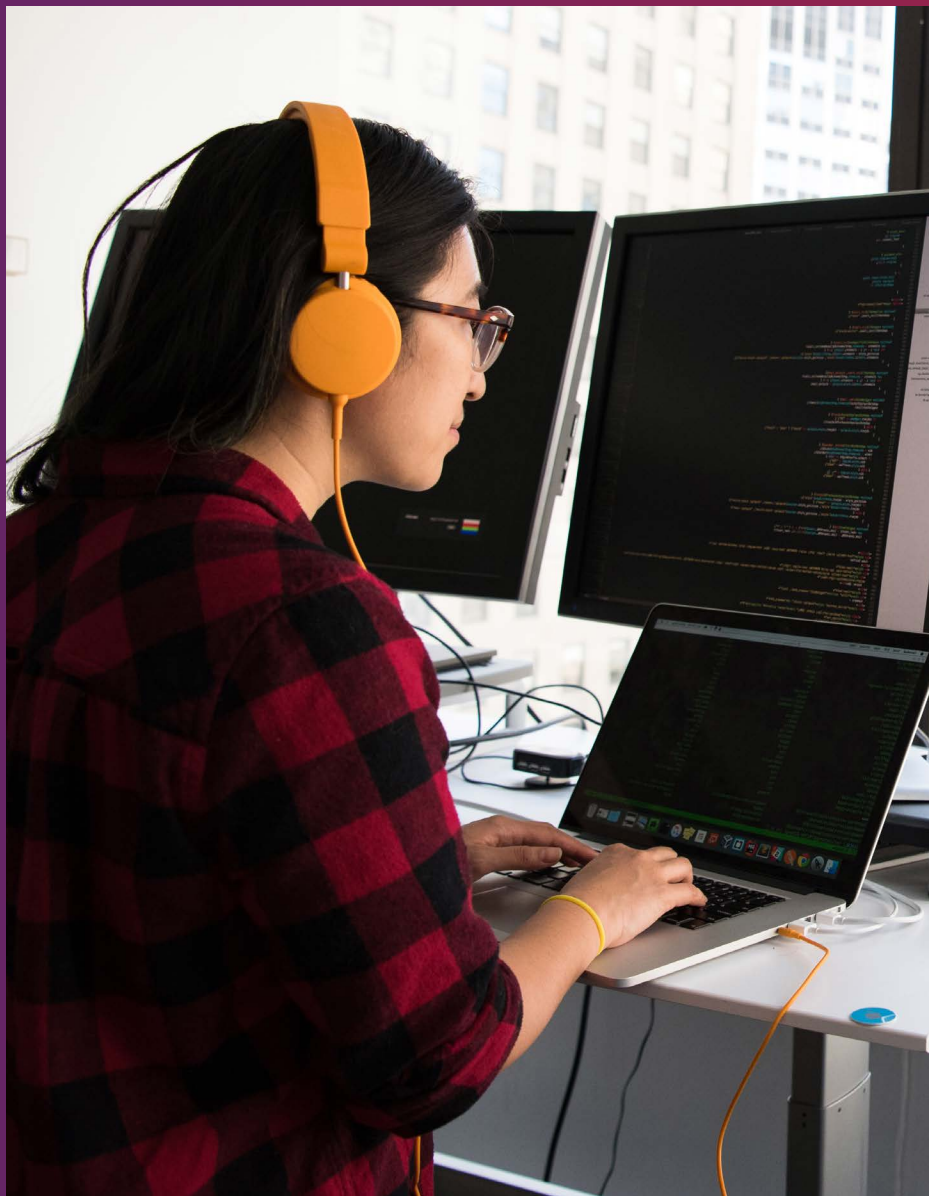
WHY ESSEX ONLINE?

- Each module is led by experienced tutors with both academic and vocational experience
- Ask questions and network with fellow professionals across the globe during live Q&A sessions with staff and students
- Continue working by studying 100% online and part-time

* Compulsory module ▲ Core module (must be passed in order to achieve the award)

Ready to start? **Apply now!**

COMPUTING COURSES



The IT sector is rapidly growing and there's an increasing demand for those with technical knowhow to shape up the industry. Ready to be part of it? Our computing courses are ideal even if you don't have any existing technical knowledge or experience – introducing you to basic concepts and complex considerations within the field. Whether you're interested in cyber security, data science, AI or computer science, we'll help you carve a successful career path in this exciting industry.

OUR COMPUTING COURSES

MSc Computer Science	180 credits
PG Dip Computer Science	120 credits
PG Cert Computer Science	60 credits
MSc Cyber Security	180 credits
PG Dip Cyber Security	120 credits
PG Cert Cyber Security	60 credits
MSc Data Science	180 credits
PG Dip Data Science	120 credits
PG Cert Data Science	60 credits
MSc Artificial Intelligence	180 credits
PG Dip Artificial Intelligence	120 credits
PG Cert Artificial Intelligence	60 credits
MSc Information Technology Management	180 credits
PG Dip Information Technology Management	120 credits
PG Cert Information Technology Management	60 credits

COMPUTER SCIENCE



Become a capable programmer with a cutting-edge computer science qualification. Whether you choose the MSc Computer Science, or shorter PG Dip or PG Cert, you'll explore secure software development and current trends to help you develop the critical thinking skills favoured by industry employers.

OUR COMPUTER SCIENCE COURSES

Qualification	Duration
MSc Computer Science	2 years
PG Dip Computer Science	16 months
PG Cert Computer Science	8 months

Study mode: online and part-time

WHAT WILL I STUDY?

Module	MSc	PGDip	PGCert
Launching into Computer Science (20 credits)	▲	▲	▲
Advanced Object-Orientated Design and Programming (20 credits)	*	*	*
Secure Software Development (Computer Science) (20 credits)	*	*	*
Network Security (10 credits)	*	*	
Cloud Operations and Management (20 credits)	*	*	
Project Management (10 credits)	*	*	
Research Methods and Professional Practice (20 credits)	▲	▲	
MSc Computing Project (60 credits)	▲		

ENTRY REQUIREMENTS

For the academic route, you must hold an undergraduate degree from an approved institution, equivalent to a UK Honours degree, or a relevant professional qualification. For the work experience entry route, we ask for at least three years' relevant work experience.

CAREER PROSPECTS

A computer science postgraduate qualification presents a wide range of opportunities. You could become a Software Developer, Programmer, Information System Administrator – or choose a role in network analysis or project management.

WHY ESSEX ONLINE?

- Our conversion courses prepare you for a rewarding career in IT, even if you have no prior experience
- All programming fees are included in the course fee so there's no need to purchase multiple software packages
- Each course is delivered 100% online part-time, allowing you to continue working alongside studying

* Compulsory module ▲ Core module (must be passed in order to achieve the award)

Ready to start? **Apply now!**

CYBER SECURITY



As the digital world becomes more connected, it's increasingly important for organisations to protect themselves against possible attacks. By studying a cyber security course with us, you'll be playing your part in mitigating risk – as you learn about key security concepts, software development and the human factor in cyber security challenges.

OUR CYBER SECURITY COURSES

Qualification	Duration
MSc Cyber Security	2 years
PG Dip Cyber Security	16 months
PG Cert Cyber Security	8 months

Study mode: online and part-time

WHAT WILL I STUDY?

Module	MSc	PGDip	PGCert
Launch into Cyber Security (20 credits)	▲	▲	▲
Network Security (10 credits)	*	*	*
Security and Risk Management (20 credits)	*	*	*
Advanced Object-Orientated Design and Programming (20 credits)	*	*	
Cloud Operations and Management (20 credits)	*	*	
Digital Forensics (10 credits)	*	*	*
Research Methods and Professional Practice (20 credits)	▲	▲	
MSc Computing Project (60 credits)	▲		

ENTRY REQUIREMENTS

For the academic route, you must hold an undergraduate degree from an approved institution, equivalent to a UK Honours degree, or a relevant professional qualification. For the work experience entry route, we ask for at least three years' relevant work experience.

WHY ESSEX ONLINE?

- Not only will you develop key technical skills, you'll also explore commercial and legal factors within cyber security
- You'll carry out all your work on the VLE, so there's no need to worry about working across multiple software packages
- Gain a qualification from a top 40 UK university (Complete University Guide 2023)

CAREER PROSPECTS

A postgraduate cyber security qualification will give you the skills you need to succeed in the exciting IT sector. You could progress in your career to become an Information Systems Administrator, Risk Analyst, Forensic Analyst or Policy Maker – or choose to work in software development, threat management or secure systems design.

* Compulsory module ▲ Core module (must be passed in order to achieve the award)

DATA SCIENCE



Make data-driven decisions by learning how to extract useful information from raw data. Explore a variety of theoretical concepts and real-world applications on our full Masters degree, or gain a solid understanding of numerical analysis with our shorter PG Dip or PG Cert courses.

OUR DATA SCIENCE COURSES

Qualification	Duration
MSc Data Science	2 years
PG Dip Data Science	16 months
PG Cert Data Science	8 months

Study mode: online and part-time

WHAT WILL I STUDY?

Module	MSc	PGDip	PGCert
The Data Professional (20 credits)	▲	▲	▲
Numerical Analysis (20 credits)	*	*	*
Deciphering Big Data (20 credits)	*	*	*
Visualising Data (20 credits)	*	*	
Machine Learning (20 credits)	*	*	
Research Methods and Professional Practice (20 credits)	▲	▲	
MSc Computing Project (60 credits)	▲		

ENTRY REQUIREMENTS

For the academic route, you must hold an undergraduate degree from an approved institution, equivalent to a UK Honours degree, or a relevant professional qualification. For the work experience entry route, we ask for at least three years' relevant work experience in IT or computer science.

CAREER PROSPECTS

With a postgraduate data science qualification, you could go on to become a successful Data Scientist, Modeller, Engineer or Architect – or choose a role in research, business intelligence or machine learning.

WHY ESSEX ONLINE?

- Our conversion courses are perfect if you don't have prior computing experience
- Learn how to make key data-driven decisions
- Explore fascinating topics such as how to decipher complex data and understand programming languages like Python

* Compulsory module ▲ Core module (must be passed in order to achieve the award)

ARTIFICIAL INTELLIGENCE



Artificial intelligence has seen a huge growth in the last few years. By studying with us, you'll gain a greater understanding of innovative intelligent systems – helping you unlock more opportunities in this exciting field.

OUR ARTIFICIAL INTELLIGENCE COURSES

Qualification	Duration
MSc Artificial Intelligence	2 years
PG Dip Artificial Intelligence	16 months
PG Cert Artificial Intelligence	8 months

Study mode: online and part-time

WHAT WILL I STUDY?

Module	MSc	PGDip	PGCert
Understanding Artificial intelligence (20 credits)	▲	▲	▲
Numerical Analysis (20 credits)	*	*	*
Machine Learning (20 credits)	*	*	*
Knowledge Representation and Reasoning (20 credits)	*	*	
Intelligent Agents (20 credits)	*	*	
Research Methods and Professional Practice (20 credits)	▲	▲	
MSc Computing Project (60 credits)	▲		

ENTRY REQUIREMENTS

For the academic route, you must hold an undergraduate degree from an approved institution, equivalent to a UK Honours degree, or a relevant professional qualification. For the work experience entry route, we ask for at least three years' relevant work experience in IT or computer science.

CAREER PROSPECTS

You could apply your postgraduate artificial intelligence qualification to a role in IT – including, Machine Learning Engineer, Business Intelligence Lead, or AI Engineer, Architect, Analyst or Researcher. Your skill set would also be valuable in the healthcare, governance and technology sectors.

WHY ESSEX ONLINE?

- All artificial intelligence courses focus on search, knowledge representation and learning which underpin this rapidly developing field
- Our conversion programmes are ideal for those who don't have any prior computing experience
- Gain an understanding of the roles mathematics and statistics play in artificial intelligence

* Compulsory module ▲ Core module (must be passed in order to achieve the award)

Ready to start? **Apply now!**

INFORMATION TECHNOLOGY MANAGEMENT



As the IT sector rapidly evolves, there's an increasing demand for those with technical expertise to shape up the industry. Ready to be part of it? Our computing courses are ideal even if you don't have any existing technical knowledge or experience – introducing you to the basic concepts and complex considerations within the field. Start carving your career path in this exciting industry today.

OUR INFORMATION TECHNOLOGY MANAGEMENT COURSES

Qualification	Duration
MSc Information Technology Management	2 years
PG Dip Information Technology Management	16 months
PG Cert Information Technology Management	8 months

Study mode: online and part-time

WHAT WILL I STUDY?

Module	MSc	PGDip	PGCert
Launch into Computing (20 credits)	▲	▲	▲
Advanced Object-Oriented Design and Programming (20 credits)	*	*	*
Machine Learning (20 credits)	*	*	*
Information Technology Service Management (ITSM) (10 credits)	*	*	
Cloud Operations and Management (20 credits)	*	*	
Enterprise IT Project Management (10 credits)	*	*	
Security and Risk Management (20 credits)	*	*	*
Research Methods and Professional Practice (20 credits)	▲	▲	
MSc Computing Project (60 credits)	▲		

ENTRY REQUIREMENTS

For the academic route, you must hold an undergraduate degree from an approved institution, equivalent to a UK Honours degree, or a relevant professional qualification. For the work experience route, you must have at least three years' relevant IT or computer science work experience.

WHY ESSEX ONLINE?

- Study when it suits you via our innovative virtual learning environment (VLE), available 24/7.
- Learn from highly experienced academics who are experts in their field.
- 90% of students feel better prepared for their future career (based on 2024 Careers and Employability survey of active students with University of Essex Online).

CAREER PROSPECTS

A postgraduate qualification in Information Technology Management gives you the essential knowledge needed to succeed in a variety of roles within computing. You could progress in your career to become a project manager, analyst, engineer or administrator in DevOps, cloud technologies or digital transformation. Alternatively, you could choose to work in governance, risk or compliance.

* Compulsory module ▲ Core module (must be passed in order to achieve the award)

LAW COURSES



Law is a fascinating subject area – and by choosing to study a law course with the University of Essex Online, you'll develop key skills that allow you to really excel in your career. Delve into the world of financial technology and the legal aspects that surround it or expand your understanding of business law on a global scale. Whether you choose an LLM, PG Dip or PG Cert, you'll be studying a course that equips you with industry-standard skills and knowledge.

OUR LAW COURSES

LLM International Business Law	180 credits
PG Dip International Business Law	120 credits
PG Cert International Business Law	60 credits

INTERNATIONAL BUSINESS LAW



Ready to get a head start in the global business game? By studying a business law course, you'll gain valuable knowledge of transnational business interactions and develop core skills that set you apart from other legal practitioners – ensuring you truly shine in your career.

OUR INTERNATIONAL BUSINESS LAW COURSES

Qualification	Duration
LLM International Business Law	2 years
PG Dip International Business Law	16 months
PG Cert International Business Law	8 months

Study mode: online and part-time

WHAT WILL I STUDY?

Module	LLM	PGDip	PGCert
International Business Law (20 credits)	*	*	*
Law of World Trade Organization (20 credits)	*	*	*
International Competition Law (20 credits)	*	*	*
Commercial Conflict of Laws (20 credits)	†	†	
Intellectual Property Law (20 credits)	†	†	
International Commercial Arbitration Dispute Resolution (20 credits)	†	†	
Legal Research Skills and Methods (20 credits)	▲	▲ ‡	
International Business Law Dissertation (60 credits)	▲		

ENTRY REQUIREMENTS

For the academic route, you must hold an undergraduate degree from an approved institution, equivalent to a UK Honours degree, or a relevant professional qualification. For the work experience entry route, you must have at least three years' relevant work experience.

CAREER PROSPECTS

Having legal business knowledge isn't just valuable to a law career – it can also apply to a variety of industries. You could be a lawyer in an international firm, a solicitor or barrister looking to meet annual CPD requirements, or a member of a global organisation regulating trade.

WHY ESSEX ONLINE?

- Be taught by passionate, knowledgeable tutors
- Receive dedicated support in small classes of up to 20 students
- Benefit from studying completely online, with no need for exams

* Compulsory module ▲ Core module (must be passed in order to achieve the award) † Optional module (choose 2 for LLM, choose 2 for PG Dip) ‡ Students must pass this module to progress on the full LLM

EDUCATION COURSES



Helping to shape young people's lives is one of the most rewarding experiences. Our education programmes will give you a global outlook on education as you'll be taught by fellow educational professionals and experienced academic tutors from across the world. You'll also learn to embrace new trends and develop your current teaching and assessment methods, while exploring the increasingly dominant role of technology within education.

OUR EDUCATION COURSES

Master of Education (M.Ed)	180 credits
PG Dip Education	120 credits
PG Cert Education (Educational Practice)	60 credits
MSc Digital Education	180 credits
PG Dip Digital Education	120 credits
PG Cert Digital Education	60 credits

EDUCATION



Our education courses deliver an extremely engaging and rewarding learning experience. You'll learn about different educational theories and strategies, reflect on your teaching and assessment methods, and have the opportunity to improve your leadership skills. Whether you're a teacher, tutor or educational leader, this is your opportunity to gain insights and be inspired by fellow educational professionals worldwide.

OUR EDUCATION COURSES

Qualification	Duration
Master of Education (M.Ed)	2 years
PG Dip Education	16 months
PG Cert Education (Educational Practice)	8 months

Study mode: online and part-time

WHAT WILL I STUDY?

Module	M.Ed	PGDip	PGCert
Philosophy of Education and Theories of Learning and Teaching (20 credits)	▲	▲	▲
Delivering Effective Teaching and Learning (20 credits)	▲	▲	▲
Introduction to Educational Assessment (10 credits)	*	*	*
Using Technology in Teaching, Learning and Assessment (10 credits)	*	*	*
The Role of Research and Academic Literature in Developing Practice (20 credits)	*	*	
Introduction to Learning Analytics (10 credits)	*	*	
The Science of Learning – Practical Implications for Teaching (10 credits)	*	*	
From Teacher to Content Developer (20 credits)	†	†	
From Teacher to Manager (20 credits)	†	†	
From Teacher to Assessment Developer (20 credits)	†	†	
Research methods in Teaching and Learning (20 credits)	▲		
Dissertation (40 credits)	▲		

ENTRY REQUIREMENTS

For the academic entry route, you must have an undergraduate degree from an approved institution, equivalent to a UK Honours degree, or a relevant professional qualification. For the work experience entry route, you must have at least two years' experience in a relevant field supported by an appropriate reference.

CAREER PROSPECTS

Due to the broad range of subjects covered within these programmes, these advanced courses will be key to your career development. You'll have the opportunity to develop skills to use within your chosen career path as a teacher, lecturer or training adviser, or as a policy developer, researcher or member of the local government.

WHY ESSEX ONLINE?

- Develop key skills for educational, vocational and education leadership roles through real-life practical situations
- Be taught by tutors who are well versed in educational theory and practice
- Learn and share best practices with peers from a diverse range of cultures and experience levels through online interactions and collaboration

* Compulsory module ▲ Core module (must be passed in order to achieve the award) † Optional module (choose 1 for M.Ed, choose 1 for PG Dip)

Ready to start? **Apply now!**

DIGITAL EDUCATION



The future of education is rapidly becoming more digital, with technology emerging at every level. Are you ready to be part of the change? Our Digital Education courses give you the latest tools to transform the learning experience, while introducing you the future role of artificial intelligence in education. You'll also explore exciting topics that provide a solid understanding of modern technology within teaching and learning – allowing you to deliver modern learning experiences while developing your own skills.

OUR DIGITAL EDUCATION COURSES

Qualification	Duration
MSc Digital Education	2 years
PG Dip Digital Education	16 months
PG Cert Digital Education	8 months

Study mode: online and part-time

WHAT WILL I STUDY?

Module	MSc	PGDip	PGCert
Philosophy of education and theories of teaching and learning (20 credits)	▲	▲	▲
Delivering effective teaching and learning (20 credits)	▲	▲	▲
Digital learning and inclusion (20 credits)	*	*	*
The role of research and academic literature in developing practice (20 credits)	*	*	
Digital production methods in teaching (20 credits)	*	*	
Digital futures: artificial intelligence and education (20 credits)	*	*	
Research methods in teaching and learning (20 credits)	▲		
Dissertation (40 credits)	▲		

ENTRY REQUIREMENTS

For the academic route, you must hold an undergraduate degree from an approved institution, equivalent to a UK Honours degree; or a relevant professional qualification. For the work experience route, you must have at least two years' teaching experience in an educational setting.

WHY ESSEX ONLINE?

- Study when it suits you via our innovative virtual learning environment (VLE), available 24/7.
- Learn from highly experienced academics who are experts in their field.
- 4 in 5 students feel better prepared for their future career or further study (based on 2021 survey of active students with University of Essex Online).

CAREER PROSPECTS

A postgraduate qualification in digital education gives you the tools and knowledge to move up in your existing career path or transition into other areas of education. Graduates enjoy a vast array of opportunities within the education sector due to their competitive edge in digital technology. Career opportunities could involve research positions, working on the implementation of new technologies within education, or even pursuing education adviser roles.

* Compulsory module ▲ Core module (must be passed in order to achieve the award) † Optional module (choose 1 for M.Ed, choose 1 for PG Dip)

HEALTH COURSES



The demand for senior healthcare professionals is always growing, so are you ready to take the next step in your career? Develop the knowledge and practical skills needed to improve patient care, disease prevention and policies – ensuring that whatever your role, you can make a real difference in others' lives.

OUR HEALTH COURSES

MSc International Healthcare Management	180 credits
PG Dip International Healthcare Management	120 credits
PG Cert International Healthcare Management	60 credits
MSc Infection Control	180 credits
PG Dip Infection Control	120 credits
PG Cert Infection Control	60 credits
Master of Public Health (MPH)	180 credits
PG Dip Public Health	120 credits
PG Cert Public Health	60 credits
MSc Nursing	180 credits
PG Dip Nursing	120 credits
PG Cert Nursing	60 credits
MSc Global Mental Health and Wellbeing	180 credits
PG Dip Global Mental Health and Wellbeing	120 credits
PG Cert Global Mental Health and Wellbeing	60 credits

INTERNATIONAL HEALTHCARE MANAGEMENT



International healthcare management carefully analyses the global issues healthcare professionals face – and what can be done about them. On each course you'll learn about the various theories of leadership and how the ethical framework shapes decision-making – allowing you to implement changes in your own healthcare environment.

OUR INTERNATIONAL HEALTHCARE MANAGEMENT COURSES

Qualification	Duration
MSc International Healthcare Management	2 years
PG Dip International Healthcare Management	16 months
PG Cert International Healthcare Management	8 months

Study mode: online and part-time

WHAT WILL I STUDY?

Module	MSc	PGDip	PGCert
Health Economics (20 credits)	*	*	*
Financial Decision Making (20 credits)	*	*	*
Strategic Management in Healthcare (20 credits)	*	*	*
Healthcare Leadership in Practice (20 credits)	*	*	
Healthcare Management: Principle and Practices (20 credits)	*	*	
Social Marketing (20 credits)	†	†	
Healthcare Improvement (20 credits)	†	†	
Social, Political and Ethical Issues in Healthcare (20 credits)	†	†	
Research Methods (20 credits)	▲		
Healthcare Management Dissertation (40 credits)	▲		

ENTRY REQUIREMENTS

For the academic route, you must hold an undergraduate degree from an approved institution, equivalent to a UK Honours degree, or a relevant professional qualification. For the work experience entry route, you must have at least three years' relevant work experience.

CAREER PROSPECTS

A qualification in healthcare management could help you progress in a hospital or healthcare environment, or as part of an international organisation. You could also advance in medical sales, outpatient care, public health or support services.

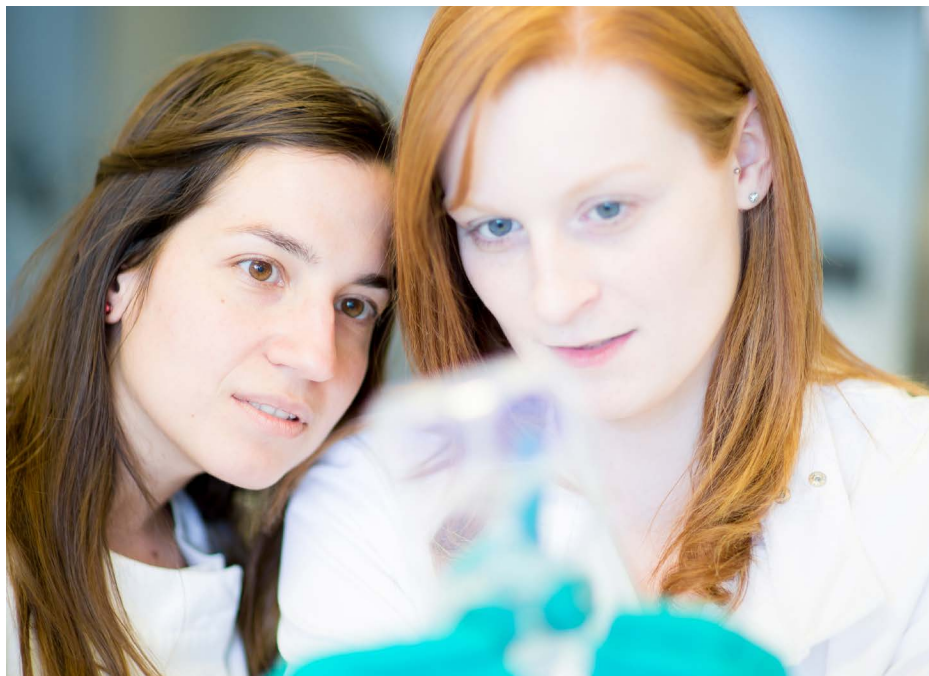
WHY ESSEX ONLINE?

- Tailor your course to suit your aspirations by choosing from optional modules
- Be taught by passionate tutors who are true experts in their field
- Benefit from close tutor support with classes capped at 20 students

* Compulsory module ▲ Core module (must be passed in order to achieve the award) † Optional module (choose 1 for MSc, choose 1 for PG Dip)

Ready to start? **Apply now!**

INFECTION CONTROL



The Covid-19 pandemic has made us all more aware of infection control. By studying an MSc, PG Dip or PG Cert, you'll be learning how to implement strategies to prevent the spread of infection and help protect the public on both a local and global scale.

OUR INFECTION CONTROL COURSES

Qualification	Duration
MSc Infection Control	2 years
PG Dip Infection Control	16 months
PG Cert Infection Control	8 months

Study mode: online and part-time

WHAT WILL I STUDY?

Module	MSc	PGDip	PGCert
Introduction to Medical Microbiology and Immunology (20 credits)	▲	▲	▲
Communicable Disease Control (20 credits)	▲	▲	▲
Infection Prevention and Quality Improvement (20 credits)	▲	▲	▲
Health Promotion (20 credits)	†	†	
Advanced Practice in Healthcare (20 credits)	†	†	
Epidemiology (20 credits)	†	†	
Applied Pathophysiology and Pharmacology in Management of Disease (20 credits)	†	†	
Healthcare Leadership in Practice (20 credits)	†	†	
Research Methods (20 credits)	▲		
Dissertation (40 credits)	▲		

ENTRY REQUIREMENTS

For the academic route, you must hold an undergraduate degree from an approved institution, equivalent to a UK Honours degree, or a relevant professional qualification. For the work experience entry route, you must have at least three years' relevant work experience.

CAREER PROSPECTS

With a postgraduate qualification in infection Control, you could take on more senior positions in environmental health, infection control and other healthcare professions. Not only that, you'll also develop key skills including report writing, time management and critical thinking.

WHY ESSEX ONLINE?

- Tailor your MSc or PG Dip qualification to suit your aspirations, with a range of optional modules
- Develop your expertise with regular Q&A sessions
- Gain a qualification from a top 40 university (Complete University Guide 2023)

▲ Core module (must be passed in order to achieve the award) † Optional module (choose 3 for MSc, choose 3 for PG Dip)

PUBLIC HEALTH



From preventing disease to improving access to health services, public health is about the lives of those around you. Whether you already work in this sector and want to advance, or you're interested in taking the first step into the field, our courses give you in-depth knowledge you need to succeed.

OUR PUBLIC HEALTH COURSES

Qualification	Duration
Master of Public Health (MPH)	2 years
PG Dip Public Health	16 months
PG Cert Public Health	8 months

Study mode: online and part-time

WHAT WILL I STUDY?

Module	MPH	PGDip	PGCert
Global Public Health (20 credits)	*	*	*
Healthcare Leadership in Practice (20 credits)	*	*	†
Health Promotion (20 credits)	*	*	†
Epidemiology (20 credits)	▲	▲	†
Financial Management in Healthcare (20 credits)	†	†	
Communicable Disease Control (20 credits)	†	†	
Digital Health (20 credits)	†	†	
Mental Health over the Life Course (20 credits)	†	†	
Research Methods in Healthcare (20 credits)	▲		
Health Dissertation (40 credits)	▲		

ENTRY REQUIREMENTS

For the academic route, you must hold an undergraduate degree from an approved institution, equivalent to a UK Honours degree, or a relevant professional qualification. For the work experience entry route, you must have at least three years' relevant work experience.

CAREER PROSPECTS

With a postgraduate qualification in public health, you'll be well prepared for a number of roles, including Community Health Practitioner, Public Health Consultant, Environmental Health Officer, Health Informatics Consultant, Occupational Health Practitioner and Outreach Community Services Manager.

WHY ESSEX ONLINE?

- Receive a one-year membership to the Royal Society for Public Health (RSPH) on completion of your first module
- Learn how to conduct an appropriate health needs assessment
- Gain an understanding of contemporary issues in global public health

* Compulsory module ▲ Core module (must be passed in order to achieve the award) † Optional module (choose 2 for MSc, PG Dip and PG Cert)

NURSING



Want to aim higher in your nursing career? A PG Cert, PG Dip or MSc in this challenging yet rewarding field will equip you with the skills you need to enter more senior nursing roles – combining specific healthcare modules with leadership and management theory.

OUR NURSING COURSES

Qualification	Duration
MSc Nursing	2 years
PG Dip Nursing	16 months
PG Cert Nursing	8 months

Study mode: online and part-time

WHAT WILL I STUDY?

Module	MSc	PGDip	PGCert
Evidence-Based Decision Making in Practice (20 credits)	*	*	*
Contemporary Issues in Nursing (20 credits)	*	*	†
Healthcare Leadership in Practice (20 credits)	*	*	†
Applied Pathology and Pharmacology in the Management of Disease (20 credits)	†	†	†
Digital Health (20 credits)	†	†	
Mental Health over the Life Course (20 credits)	†	†	
Infection Prevention and Quality Improvement (20 credits)	†	†	
Research Methods in Healthcare (20 credits)	▲		
Health Dissertation (40 credits)	▲		

ENTRY REQUIREMENTS

For the academic route, you must hold an undergraduate degree from an approved institution, equivalent to a UK Honours degree, or a relevant professional qualification. For the work experience entry route, we ask for at least three years' post-qualification work experience as a registered nurse or licensed to practice as a nurse with a nursing regulator or appropriate licensing board, supported by appropriate references.

CAREER PROSPECTS

With a postgraduate nursing qualification, you'll have the skills required to move from a clinical role into a senior management position. This could be as a Ward or Nurse Manager, Senior Staff Nurse or Nursing Officer.

WHY ESSEX ONLINE?

- Study 100% online, part time, and continue working in your current role
- Explore the role of management in a healthcare setting
- Be taught by experienced, passionate tutors

* Compulsory module ▲ Core module (must be passed in order to achieve the award) † Optional module (choose 3 for MSc, choose 3 for PG Dip, choose 2 for PG Cert)

GLOBAL MENTAL HEALTH AND WELLBEING



Mental health and wellbeing have become major topics in the aftermath of Covid-19. You don't need to be in healthcare to study these innovative courses; from HR managers to team leaders, everyone can benefit from a greater understanding of the mental health challenges faced by people worldwide.

OUR GLOBAL MENTAL HEALTH AND WELLBEING COURSES

Qualification	Duration
MSc Global Mental Health and Wellbeing	2 years
PG Dip Global Mental Health and Wellbeing	16 months
PG Cert Global Mental Health and Wellbeing	8 months

Study mode: online and part-time

WHAT WILL I STUDY?

Module	MSc	PGDip	PGCert
Introduction to Global Mental Health and Wellbeing (20 credits)	*	*	*
Contemporary Issues in Mental Health and Wellbeing (20 credits)	†	†	
Mental Health over the Life Course (20 credits)	*	*	*
Global Policy and Ethics in Mental Health (20 credits)	*	*	
Epidemiology (20 credits)	▲	▲	*
Advanced Practice in Healthcare (20 credits)	†	†	
Specialist Topics in Mental Health and Wellbeing (20 credits)	†	†	
Dementia in Contemporary Society (20 credits)	†	†	
Research Methods	▲		
Research Project (Dissertation) (40 credits)	▲		

ENTRY REQUIREMENTS

For the academic route, you must hold an undergraduate degree from an approved institution, equivalent to a UK Honours degree, or a relevant professional qualification. For the work experience entry route, you must have at least three years' relevant work experience.

WHY ESSEX ONLINE?

- Tailor your programme to be more clinical or holistic, with a range of optional modules
- Continue working by studying 100% online, part time
- Develop key skills such as critical thinking, time management and research

CAREER PROSPECTS

With a postgraduate qualification in global mental health and wellbeing, you'll be well prepared to become a Specialist Nurse, Health Service Manager or Specialist Mental Health Practitioner. Away from a health setting, you could progress as a Wellbeing Adviser, Commissioning Manager, or HR Coach, Mentor or Mental Health Lead.

* Compulsory module ▲ Core module (must be passed in order to achieve the award) † Optional module (choose 2 for MSc, choose 2 for PG Dip)

Ready to start? **Apply now!**

PSYCHOLOGY COURSES



Why do people think and behave the way they do? How are thoughts formed in the brain? If you're interested in solving the puzzle, then our thought-provoking psychology programmes are for you. They'll give you the opportunity to explore theories that inform your own thinking and develop key skills to suit a huge range of sectors.

OUR PSYCHOLOGY COURSES

MSc Psychology	180 credits
PG Dip Psychology	120 credits
PG Cert Psychology	60 credits
MSc Organisational Psychology	180 credits
PG Dip Organisational Psychology	120 credits
PG Cert Organisational Psychology	60 credits

PSYCHOLOGY



Designed with a strong focus on employability, our courses allow you to explore the fascinating subjects within psychology – from theoretical ideas to practical applications across multiple disciplines. They're also ideal even if you don't have any prior experience in psychology.

OUR PSYCHOLOGY COURSES

Qualification	Duration
MSc Psychology	2 years
PG Dip Psychology	16 months
PG Cert Psychology	8 months

Study mode: online and part-time

WHAT WILL I STUDY?

Module	MSc	PGDip	PGCert
Core Principles of Psychological Enquiry (10 credits)	*	*	*
Human Development over the Lifespan (20 credits)	▲	▲	▲
Research Methods (10 credits)	*	*	*
Critical Social Psychology (20 credits)	▲	▲	▲
Advanced Research Methods (20 credits)	▲	▲	
Psychobiology and Neuroscience (20 credits)	▲	▲	
Psychology Skills and Employability (20 credits)	*	*	
MSc Psychology Dissertation (60 credits)	▲		

ENTRY REQUIREMENTS

For the academic entry route, you must have an undergraduate degree from an approved institution, equivalent to a UK Honours degree, or a relevant professional qualification. For the work experience entry route, you must have at least three years' relevant work experience.

CAREER PROSPECTS

Psychology can be useful in many fields including counselling, marketing, the civil service, healthcare and the legal system. Students can also pursue further education in psychology to enter one of the many career paths within the field, such as investigative and forensic psychology, neuroscience, healthcare, clinical roles, child development and education, sports, exercise and occupational psychology.

WHY ESSEX ONLINE?

- Explore key concepts such as psychological inquiry and research methods
- Develop transferable skills, including communication, critical thinking, reasoning and problem solving
- Our courses are 100% assignment and project-based, so there's no need to worry about exams

* Compulsory module ▲ Core module (must be passed in order to achieve the award)

ORGANISATIONAL PSYCHOLOGY

WHAT WILL I STUDY?



Interested in exploring key psychological theories in workplace settings? These courses are ideal if you're interested in business psychology, whatever your academic or professional background. Discover the fundamentals of how to solve problems within organisations and employees in mind, while delving into common workplace matters.

OUR ORGANISATIONAL PSYCHOLOGY COURSES

Qualification	Duration
MSc Organisational Psychology	2 years
PG Dip Organisational Psychology	16 months
PG Cert Organisational Psychology	8 months

Study mode: online and part-time

Module	MSc	PGDip	PGCert
Core Principles of Psychological Enquiry (10 credits)	*	*	*
Strategic Human Resource Development (20 credits)	▲	▲	▲
Research Methods (10 credits)	*	*	*
Psychological Assessment at Work (20 credits)	▲	▲	▲
Mentoring and Coaching for Organisational Effectiveness (20 credits)	▲	▲	
Global Environment and People Management (20 credits)	†	†	
Diversity Management in a Global Economy (20 credits)	†	†	
Leadership and Management Development (20 credits)	†	†	
Applied Research Methods (20 credits)	▲	▲	
MSc Psychology Dissertation (60 credits)	▲		

ENTRY REQUIREMENTS

For the academic entry route, you must have an undergraduate degree from an approved institution, equivalent to a UK Honours degree, or a relevant professional qualification. For the work experience entry route, you must have at least three years' relevant work experience.

CAREER PROSPECTS

Upon completion, you'll hold extensive knowledge and skills useful in roles in organisational development, human resources and employee training, as well as marketing, sales and management related disciplines. These courses are also beneficial for careers within academia and research, enabling you to progress to a PhD or professional doctorate in a related field.

WHY ESSEX ONLINE?

- We're one of only a few providers of 100% online and part-time organisational psychology programmes
- There's a strong emphasis on employability from the start, including elements that focus on CV writing, oral presentations and research skills
- The flexible mode of study allows you to gain a respected qualification while continuing in your current career

* Compulsory module ▲ Core module (must be passed in order to achieve the award) † Optional module (choose 1 for MSc, choose 1 for PG Dip)

CRIMINOLOGY COURSES



Want to drive change in society? A postgraduate criminology course at the University of Essex Online will help you think outside the box when it comes to thought-provoking issues. Not only will you find answers to hard-hitting questions, you'll also explore the criminal justice system in great depth, preparing you for more senior roles in criminology.

OUR CRIMINOLOGY COURSES

MSc Criminology and Criminal Psychology	180 credits
PG Dip Criminology and Criminal Psychology	120 credits
PG Cert Criminology and Criminal Psychology	60 credits

CRIMINOLOGY AND CRIMINAL PSYCHOLOGY



As well as delving into criminal theory, our courses also allow you to explore the psychological aspects of criminology. Gain a qualification in as little as eight months with the PG Cert, 16 months with the PG Dip, or aim for the highest level available with the two-year MSc.

OUR CRIMINOLOGY AND CRIMINAL PSYCHOLOGY COURSES

Qualification	Duration
MSc Criminology and Criminal Psychology	2 years
PG Dip Criminology and Criminal Psychology	16 months
PG Cert Criminology and Criminal Psychology	8 months

Study mode: online and part-time

WHAT WILL I STUDY?

Module	MSc	PGDip	PGCert
Applied Forensic Psychology (20 credits)	*	*	†
Crime, Causation and Criminological Theory (20 credits)	*	*	†
Complex Criminal Investigation (20 credits)	*	*	*
Practical Psychology for Policing (20 credits)	*	*	†
Criminal Victimisation (20 credits)	†	†	†
Policing: Leadership, Policy and Partnerships (20 credits)	†	†	
Advanced Research Methods (20 credits)	▲	▲	
Criminology and Criminal Psychology Thesis (60 credits)	▲		

ENTRY REQUIREMENTS

For the academic route, you must hold an undergraduate degree from an approved institution, equivalent to a UK Honours degree, or a relevant professional qualification. For the work experience entry route, we ask for at least three years' relevant work experience.

CAREER PROSPECTS

A postgraduate criminology qualification opens up a whole host of opportunities. You could go on to work in offender support, victim services, probation or a prison, or as part of the police or National Crime Agency.

WHY ESSEX ONLINE?

- Course content shaped by cutting-edge research at University of Essex's Centre for Criminology
- Modules developed by a former Detective Chief Superintendent from one of the UK's most prominent Homicide and Major Enquiries teams
- Graduate in person at the University of Essex's Colchester campus

* Compulsory module ▲ Core module (must be passed in order to achieve the award) † Optional module (choose 1 for MSc, choose 1 for PG Dip, choose 3 for PG Cert)

Ready to start? **Apply now!**



IMPORTANT STUFF

Applying for university may be one of the biggest decisions you'll ever make. To help make the process as simple as possible, we've put together all the information you need on how to fund your studies and how to apply.

If you still have any questions at the end, our Admissions team will be more than happy to talk it over with a friendly call.

FUNDING YOUR STUDIES

Moneyback guarantee

As part of our 21-day moneyback guarantee, if you decide after three weeks that your course isn't for you, we'll give you a full refund. [Terms and conditions](#) apply.

Payment options

UK nationals and EU nationals living in England can apply for a government backed postgraduate student loan. These are paid directly to you and you can choose how much to borrow (depending on the current maximum loan limit set by the Student Loans company).

Eligibility is determined by the Student Loans Company and requirements for those living in England include:

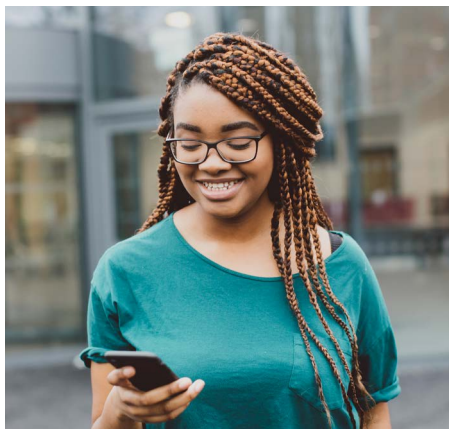
- being under 60 years of age on the first day of the first academic year of your course
- being a UK national, or have settled or pre-settled status under the EU Settlement Scheme
- having lived in the UK, the Channel Islands or the Isle of Man for three years prior to starting your course
- not having already obtained a postgraduate degree or taken out a postgraduate student loan

[Click here to check your eligibility](#)

If you're ineligible for a tuition fee loan, we also provide a simple monthly payment plan to spread the cost of your fees. Alternatively, you may choose to pay the full fee up front, for which we'll offer you a 5% discount.

Loan repayments

You'll only [start repaying your loan](#) once your income is more than £21,000 a year and any outstanding balance will be written off after 30 years. If your circumstances change and your annual income drops below £21,000 a year, your repayments will stop.



We know cost is a huge factor when you're considering studying online. That's why we have a range of funding options to choose from and a knowledgeable team ready to help you make the right decisions.

Scholarships and discounts

We're on a mission to make education more accessible to everyone, which is why we offer a range of options to reduce the cost of learning.

Full payment discount

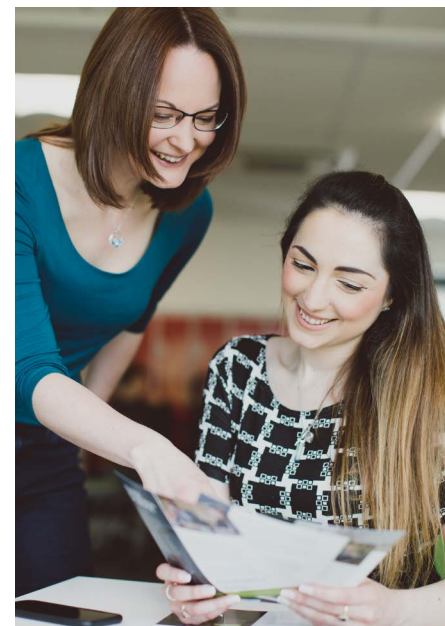
We'll apply a 5% discount* if you choose to pay your full course fee upfront.

Alumni discount

If you've previously studied an undergraduate degree with the University of Essex or University of Essex Online, you're eligible for a 10% discount on any of our Masters degrees. Please note the alumni discount cannot be used in combination with any scholarships.

International scholarship

Students residing in specific regions outside the UK may be eligible for a partial scholarship; please contact our Admissions team for further details.



ELCAS funding

If you're in the UK Armed Forces and are considering your options for resettlement, you may be able to access funding from the Enhanced Learning Credits Administration Service (ELCAS). All our courses are approved by the scheme, so just mention it to our Admissions team when you apply.

Corporate discount

If your organisation has 3 or more employees, or you are a not-for-profit organisation, you may be eligible to join our corporate partner list. Becoming a corporate partner entitles you and your employees to 10% tuition fee discount. This can be used in conjunction with our up-front payment discount, but not in conjunction with any other discounts and/or scholarships.

*Applicable only to students studying online and does not apply to students studying on campus.

STEPS TO JOIN ESSEX ONLINE



1 – Download a prospectus

online.essex.ac.uk/prospectus

Review our institution and online courses.

2 – Find the right course for you

Consider your options

Research our website and prospectus information.

3 – Talk with an admissions adviser

You'll be designated a personal adviser that will contact you

Get answers to all your questions, from course details, fees and funding options to entry requirements.

4 – Connect with a student ambassador

online.essex.ac.uk/chat

Get an authentic insight into the online student experience. Check out their blogs or start a chat with them.

5 – Submit an online application

online.essex.ac.uk/apply

It's free to apply and there are just five steps to complete the form — it's really that simple!

6 – Receive your application outcome

You'll hear back within 2 working days after applying

Our Admissions team will be in touch to let you know the decision — if successful you'll progress to the next step.

7 – Accept your offer

Confirm your place on your course

After accepting your offer you will need to pay your tuition fee deposit. You'll then be ready to start your course on your selected start date.

8 – Welcome to Essex Online

Our Student Support team will invite you to welcome sessions

They'll prepare you for your induction module and introduce you to the virtual learning environment.

IMPORTANT INFORMATION

About this prospectus

When we might make changes to advertised courses and other information

This prospectus is intended to answer your questions about the academic provision on offer at University of Essex Online. It may be necessary to make minor changes to our courses or [Terms and Conditions](#). Reasons may include: to reflect changes in relevant laws and regulatory requirements; or to implement minor technical adjustments and improvements that ensure consistency with UK higher education sector practice and guidance, including complying with our obligations under the Quality Code. In exceptional circumstances it might be necessary to make more significant changes to a course our [Terms and Conditions](#). These may include:

- to increase tuition fees annually to proportionately reflect the costs associated with establishing and providing the course, such as any changes in higher education funding we may receive
- to correct errors
- by adding or removing optional modules
- if a third party such as the University of Essex or the Student Loans Company imposes changes on us, such as amending a policy or procedure

If a course change or closure is proposed in such circumstances, we'll take all reasonable steps to minimise disruption to students. This will include informing students of the changes in advance and giving them appropriate opportunity to comment on the proposals.

No liability for matters outside our control

We cannot be held responsible for delays or

inaccessibility outside our control. If our provision of courses is delayed or the learning platform is inaccessible due to an event outside our control, then we will contact you as soon as possible to let you know and will take steps to minimise the effect. Provided we do this, we will not be liable for delays or inaccessibility caused by the event, but if there is a risk of substantial delay or inaccessibility, you may contact us to end the contract and receive a refund for any part of a course you have paid for but not received.

Admissions Policy

Applicants are considered in line with our [Admissions Policy](#).

Terms and Conditions

Should your application be approved, we will send you an offer letter which will confirm the details of your course and start date. We will also send you a study plan outlining the indicative study duration for your course and a payment plan stating your net tuition fees.

The offer letter will also contain a link to our acceptance form. Acceptance of your application will take place when you follow the link and submit the form. At this point a contract will come into existence between you and us. By submitting the online acceptance form you are formally accepting your place on the course and start date as set out in your offer letter. Submission of the acceptance form also constitutes your agreement to our [Terms and Conditions](#).

Key policies

All our policies are available at online.essex.ac.uk/policies.

Quality assurance and teaching excellence

University of Essex Online programmes are delivered by Kaplan Open Learning, an experienced online learning provider. We have been working in partnership with the University of Essex since 2007.

We are registered with the [Office for Students](#), meaning we meet its requirements for course quality, student support and more. It also includes meeting the expectations for standards and quality as set out in the [UK Quality code for higher education](#). Our dedication to offering our students a transformational education has led to Kaplan Open Learning being awarded the highest rating of gold in the Teaching Excellence Framework (2018). The gold rating demonstrates that the institution delivers consistently outstanding teaching, learning and outcomes for its students and is one of the highest quality found in the UK.

[Kaplan Open Learning](#) is part of Kaplan Inc., one of the world's largest and most diverse education providers. We encourage our students to transform their lives and careers by delivering and expanding our suite of innovative, industry-led and career enhancing higher education programmes.

Complaints procedure

University of Essex Online welcomes applications from all candidates with the potential to succeed. Our admissions procedures are designed to ensure that all applicants are considered wholly based on their aptitudes, skills and abilities in relation to their chosen programme of study. However, we recognise that there may be occasions when applicant may feel that we have not adhered to our policies and the high standards we set ourselves. Our [Complaints and Appeals Policy for Applicants](#) describes the process to follow if an applicant believes that they have grounds for an appeal or complaint.

Policy statement on equality and diversity

University of Essex Online recognises the value of diversity. We are committed to equality of

opportunity for our students. We expect students to be treated with dignity and respect solely on the basis of their merit, abilities and potential, regardless of age, disability, sexual orientation, family circumstances or other irrelevant distinction.

Tuition fee increases during your studies

The full tuition fees are advertised on [our website](#). Full tuition fees include the cost of all core e-books. The applicable net tuition fees for your course will be shown on your payment plan. Tuition fees are reviewed annually. We reserve the right to increase tuition fees for current students in line with the RPI-X index and apply applicable sales taxes.

Moneyback guarantee

We stand behind the academic quality of our online courses and are committed to ensuring that you are enrolled on a course that's right for you. However, if you decide your course is not for you within the first 21 days then you can withdraw from your programme without any cost.

You may end your contract with us and not be charged any tuition fees (or obtain a full refund if you have paid them) at any time up until 21 days from the start date of your course. [Terms and Conditions](#) apply.

Photography

Every effort has been made to obtain permission to reproduce the images contained herein. Please [contact us](#) if you have any queries or any information relating to the images.

Data for marketing purposes

Data has been selected for marketing purposes, but all claims are based on the most recent data available at the time of publishing.

Produced by the University of Essex Online Marketing team.

Please consider the environment before printing this document.

Last updated: 20 March 2026

WE ARE ESSEX ONLINE. IF YOU GIVE UP AT THE FIRST OBSTACLE, ESSEX ONLINE ISN'T FOR YOU. IF YOU WANT TO BE SPOON-FED A COURSE, ESSEX ONLINE ISN'T FOR YOU. IF YOU'RE WILLING TO **MAKE SACRIFICES AND WORK HARD**, ESSEX ONLINE IS FOR YOU. WE'RE ON THE SIDE OF PEOPLE WITH **GRIT AND PERSEVERANCE**. WE'RE ABOUT PEOPLE WHO ARE BOLD ENOUGH TO **CHALLENGE THE STATUS QUO**. WE'RE AFTER PEOPLE WHO DEFY THE NAYSAYERS, BECAUSE **CHALLENGING CONVENTION** IS IN ON OUR DNA. WE WANT PEOPLE WHO LOVE TO LEARN HOW BUT ALSO **WANT TO CHALLENGE WHY**. IT DOESN'T MATTER WHERE YOU'RE FROM, WHAT YOU DO OR WHAT STAGE IN LIFE YOU'RE AT. WE'RE INTERESTED IN HOW YOU WANT TO GROW AND **WHAT YOU WANT TO CHANGE**. WE'LL PROVIDE YOU WITH THE KNOWLEDGE AND SKILLS TO **TRANSFORM LIVES: YOURS AND THOSE AROUND YOU**. WE'LL CONNECT YOU WITH PEOPLE FROM ALL CORNERS OF THE WORLD – **A TRULY GLOBAL COMMUNITY**. SO, ARE YOU GOING TO SIT AND WATCH THE WORLD GO BY? OR DO YOU HAVE THE NERVE TO **FACE CHALLENGES HEAD ON?** WE'LL BE HERE EVERY STEP OF THE WAY HELPING YOU **REALISE YOUR AMBITIONS**. IF YOU'RE READY – **WELCOME HOME**.

online.essex.ac.uk

+44 (0) 1206 489 358 | enquiries@online.essex.ac.uk